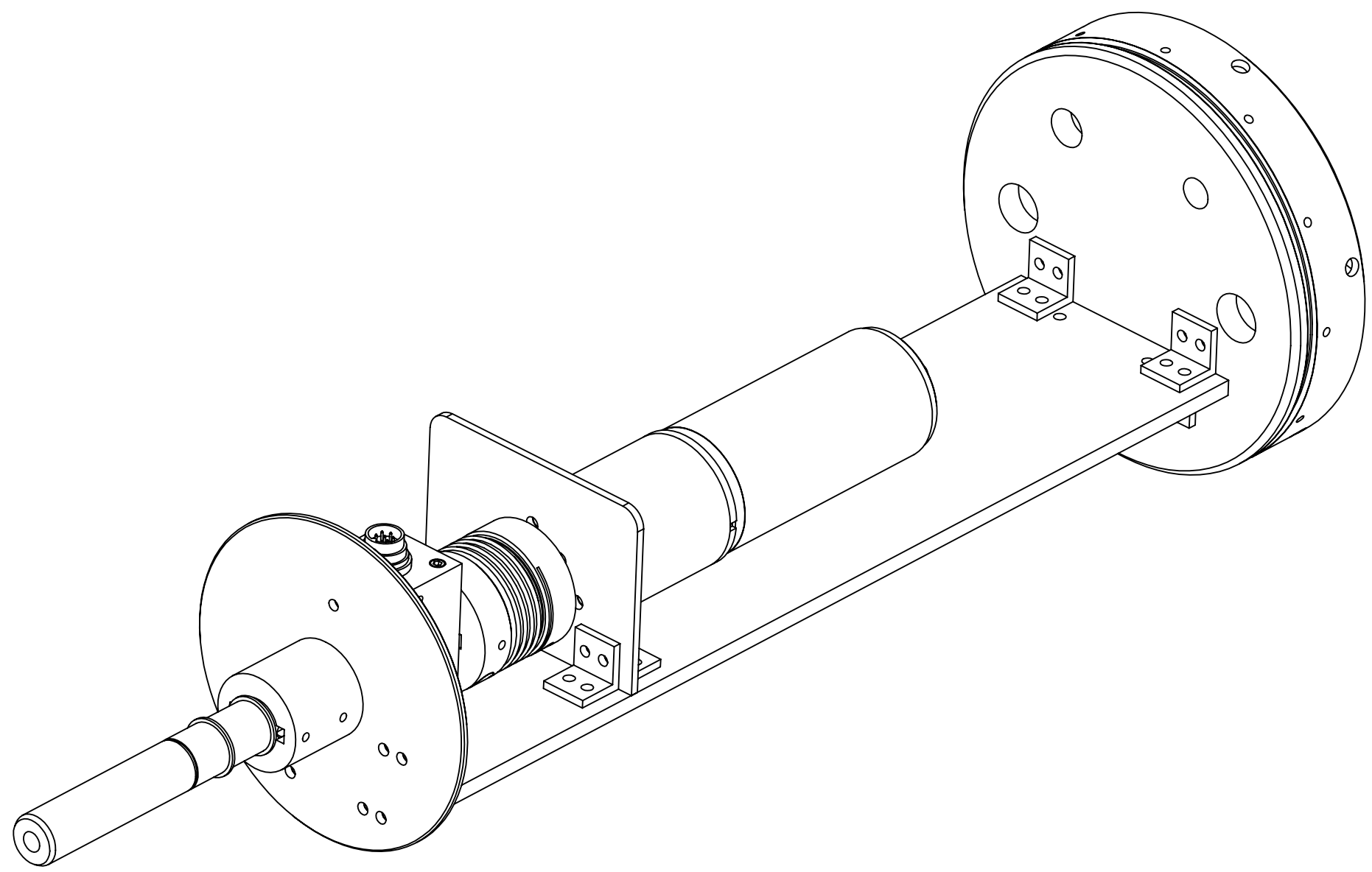



8 7 6 5 4 3 2 1

D
C
B
A



UNLESS OTHERWISE SPECIFIED:		NAME	DATE		
TOLERANCES: FRACTIONAL $\pm 1/16$ ANGULAR: 0.1 Deg 2 PLACE DECIMAL ± 0.01 3 PLACE DECIMAL ± 0.005		DRAWN	K. Patel		7/8/2013
MATERIAL		CHECKED			
FINISH		COMMENTS:			TITLE: Instrumentation Tray
DO NOT SCALE DRAWING		SIZE	DWG. NO.	REV	
		B	AQU-INST	14	
		SCALE: 1:2	Weight: lbs	SHEET 1 OF 18	

8 7 6 5 4 3 2 1

Gearbox Mounting Bracket					
Item #	Description	Retailer	P/N	Qty.	Used for
1.	18-8 SS #8-32x 5/8" Lg. Cap Screw Head	McMaster-Carr	94912A230	16	Angle brackets to tray
2.	18-8 SS #8-32 Hex Nuts	McMaster-Carr	91240A009	16	For cap screws
3.	18-8 SS M5 x 16mm Cap Screw Head	McMaster-Carr	91292A126	8	Secure gearbox to bracket
Alignment Disc					
Item #	Description	Retailer	P/N	Qty.	Used for
1.	18-8 SS #8-32x 5/8" Lg. Cap Screw Head	McMaster-Carr	94912A230	14	Angle brackets to tray
2.	18-8 SS #8-32 Hex Nuts	McMaster-Carr	91240A009	14	For cap screws
3.	18-8 SS M4 x 10mm Cap Screw Head	McMaster-Carr	91292A116	1	Secure torque transducer to disc
Main Shaft					
Item #	Description	Retailer	P/N	Qty.	Used for
1.	External Retaining Ring	Smalley	FS-020	2	Secure shaft in bearing
2.	External Retaining Ring	McMaster-Carr	90967A235	1	Secure hub on shaft
3.	6mm x 6mm standard key	McMaster-Carr	96717A201	2	Secure torque transducer to disc
Seal Housing					
Item #	Description	Retailer	P/N	Qty.	Used for
1.	18-8 SS #8-32x 3/4" Lg. Cap Screw Head w/ lock washer	McMaster-Carr	94912A235	6	Secure seal housing to pressure vessel
2.	19.8mm o-rings	McMaster-Carr	93125K49	2	To maintain water tight integrity between seal and housing
Pressure Vessel					
Item #	Description	Retailer	P/N	Qty.	Used for
1.	SKF Bearing	SKF	3204 A-2RS1TN9/MT33	1	Shaft rotation
2.	Outer Retaining Ring	Smalley	VHM-47	1	Secure shaft in bearing
Hub					
Item #	Description	Retailer	P/N	Qty.	Used for
1.	18-8 SS #8-32x 3/4" Lg. Cap Screw Head w/ lock washer	McMaster-Carr			
Split Coupling Assembly					
Item #	Description	Retailer	P/N	Qty.	Used for
1.	18-8 SS #8-32x 3/16" Lg. & 3/16" shoulder 5/8" Lg. hex bolt	McMaster-Carr	94035A206	4	Fastening split couplings together
2.	18-8 SS #8-32 Hex Nuts	McMaster-Carr	91240A009	4	For shoulder bolts
Torque Transducer					
Item #	Description	Retailer	P/N	Qty.	Used for
1.	Set screws	McMaster-Carr		4	Secure position of couplings

FWD Bulkhead Seal					
Item #	Description	Retailer	P/N	Qty.	Used for
1.	18-8 SS Captive Nut threaded #8-32 insert	McMaster-Carr	94648A340	6	Secure fwd nose cone to fwd bulkhead seal
2.	18-8 SS #8-32x 1/2 Lg.	McMaster-Carr	910099A265	6	Secure fwd nose cone to fwd bulkhead seal
3.	18-8 SS #4-40x 1/4" Lg.	McMaster-Carr	91400A106	16	Secure Amphenol box mounting receptacle
4.	2-230 O-Ring, 1/8" wide, 2.75 OD x 2.5 ID	McMaster-Carr	5018T267	1	O-Ring between fwd bulkhead & pressure vessel
5.	18-8 SS 1/4-20 UNC x 3/4"	McMaster-Carr	91772A540	4	Secure Block Gauge Bracket to fwd bulkhead
6.	Box Mounting Receptacle Shell	Amphenol	Size #8	1	Instrumentation
7.	Box Mounting Receptacle Shell	Amphenol	Size #10	1	Instrumentation
8.	Box Mounting Receptacle Shell	Amphenol	Size #12	2	Instrumentation
Dyno Adapt.					
Item #	Description	Retailer	P/N	Qty.	Used for
1.					
2.					
3.					

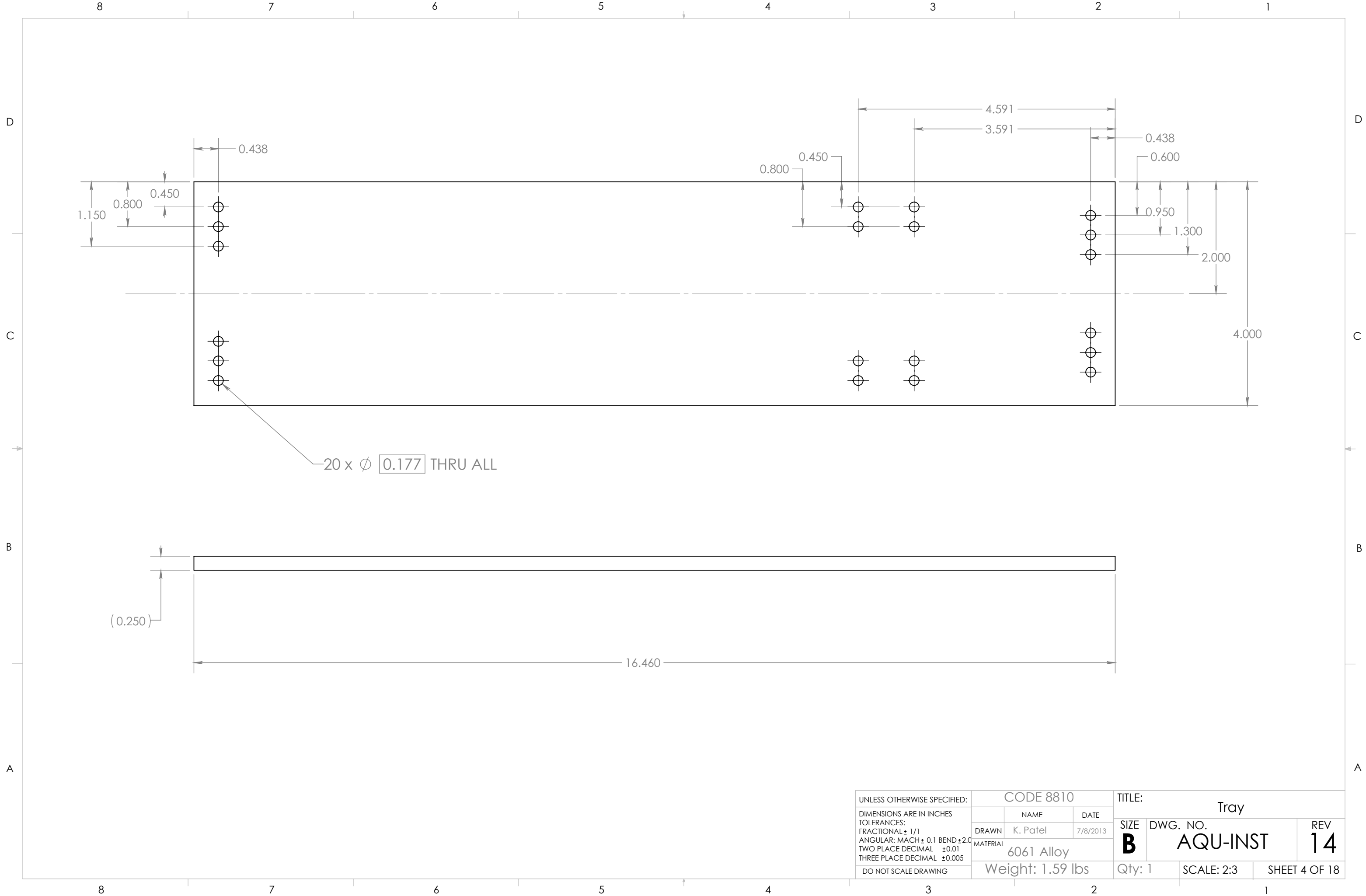
UNLESS OTHERWISE SPECIFIED:		CODE 5310		TITLE: Parts List	
DIMENSIONS ARE IN INCHES		NAME	DATE	SIZE	DWG. NO.
TOLERANCES:		DRAWN	K. Patel	7/8/2013	REV
FRACTIONAL ± 1/1		MATERIAL		B	AQU-INST
ANGULAR: MACH ± 0.1 BEND ± 2.0					14
TWO PLACE DECIMAL ± 0.01					
THREE PLACE DECIMAL ± 0.005					
DO NOT SCALE DRAWING		Weight: lbs		Qty:	SHEET 2 OF 18

D
C
B
A

D
C
B
A

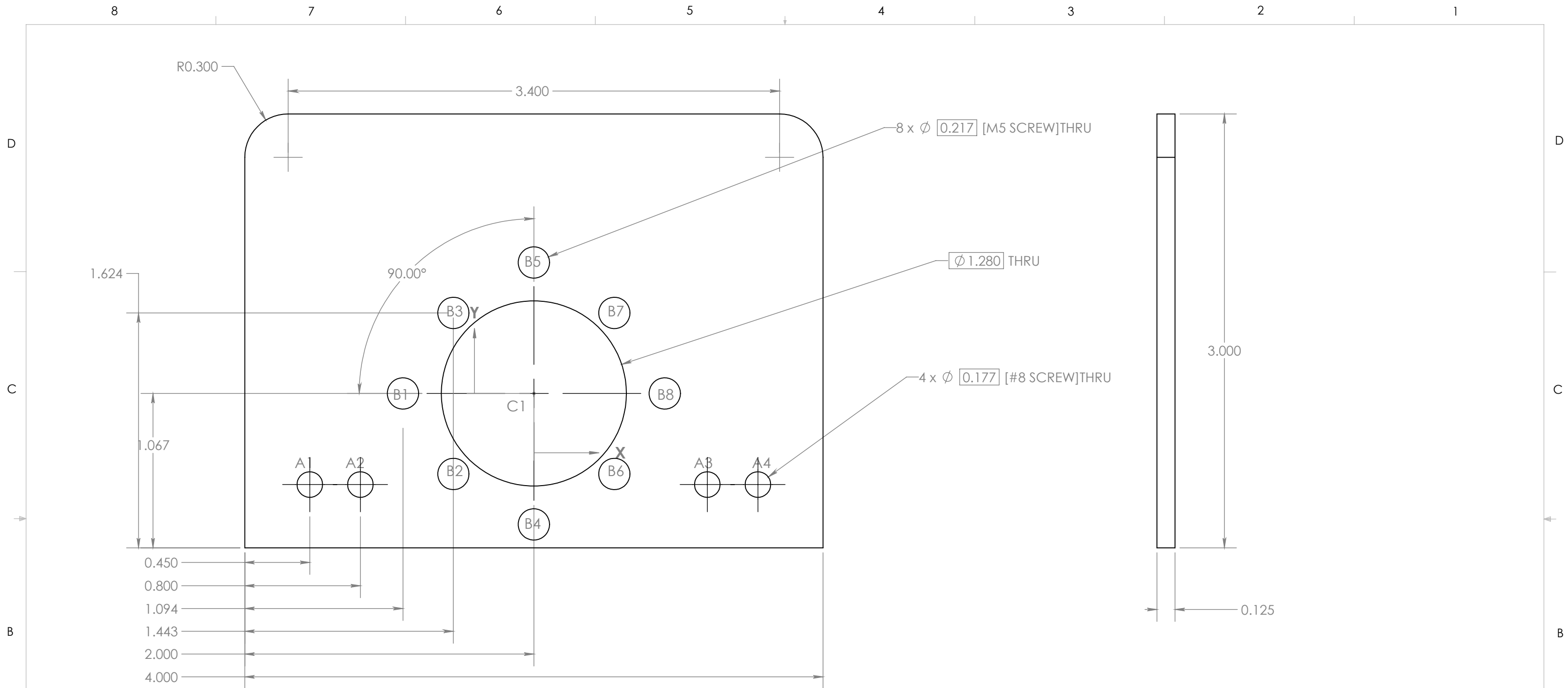
NOTIFICATION OF CHANGE		
ITEM	PG #	MODIFICATIONS
PARTS LIST	2	Added
TRAY	4	
GEARBOX MOUNTING BRACKET	5	
ALIGNMENT DISC	6	
ANGLE BRACKET	7	
FWD BULKHEAD SEAL PG. 1/2	8	
FWD BULKHEAD SEAL PG. 2/2	9	
MAIN SHAFT	10	Key depth added in section F-F
HUB	11	
DYNO ADAPTER	12	Change in bolt pattern
COUPLER	13	Change in bore diameter
SEAL HOUSING	14	Note 2 added
PRESSURE VESSEL	15	Note 2 added
Gearbox Split Coupling	16	Part added for fabrication
Transducer Split Coupling	17	Part added for fabrication
Calibration Tool	18	Part added for fabrication
NOTE: THIS TABLE IDENTIFIES ANY CHANGES MADE TO THIS DRAWING PACKAGE FROM THE <u>PREVIOUS</u> REVISION.		

UNLESS OTHERWISE SPECIFIED: DIMENSIONS ARE IN INCHES TOLERANCES: FRACTIONAL ± 1/1 ANGULAR: MACH ± 0.1 BEND ± 2.0 TWO PLACE DECIMAL ± 0.01 THREE PLACE DECIMAL ± 0.005 DO NOT SCALE DRAWING	CODE 8810		TITLE: Notification of Change	
	NAME	DATE	SIZE B	DWG. NO. AQU-INST
	DRAWN K. Patel	7/8/2013		
	MATERIAL	Weight: lbs	Qty:	SHEET 3 OF 18



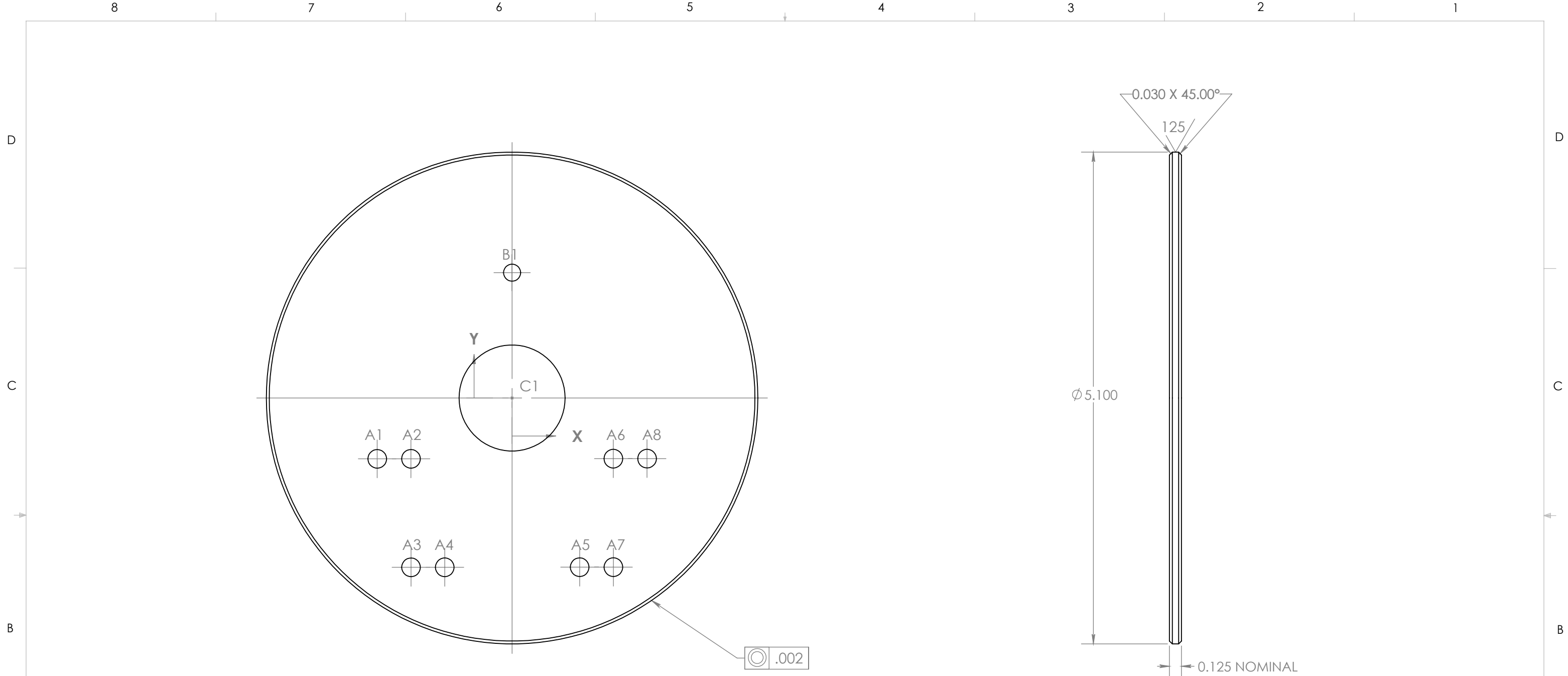
20 x ϕ 0.177 THRU ALL

UNLESS OTHERWISE SPECIFIED: DIMENSIONS ARE IN INCHES TOLERANCES: FRACTIONAL \pm 1/1 ANGULAR: MACH \pm 0.1 BEND \pm 2.0 TWO PLACE DECIMAL \pm 0.01 THREE PLACE DECIMAL \pm 0.005 DO NOT SCALE DRAWING	CODE 8810		TITLE: Tray		
	DRAWN	K. Patel	DATE	7/8/2013	SIZE
	MATERIAL		6061 Alloy		DWG. NO.
	Weight: 1.59 lbs		Qty: 1	SCALE: 2:3	REV
				AQU-INST	14
				SHEET 4 OF 18	



TAG	X LOC	Y LOC	SIZE
A1	-1.550	-.630	Ø 0.177 THRU
A2	-1.200	-.630	Ø 0.177 THRU
A3	1.200	-.630	Ø 0.177 THRU
A4	1.550	-.630	Ø 0.177 THRU
B1	-.906	.000	Ø 0.217 THRU
B2	-.557	-.557	Ø 0.217 THRU
B3	-.557	.557	Ø 0.217 THRU
B4	-.000	-.906	Ø 0.217 THRU
B5	-.000	.906	Ø 0.217 THRU
B6	.557	-.557	Ø 0.217 THRU
B7	.557	.557	Ø 0.217 THRU
B8	.906	.000	Ø 0.217 THRU
C1	.000	.000	Ø 1.280 THRU

UNLESS OTHERWISE SPECIFIED: DIMENSIONS ARE IN INCHES TOLERANCES: FRACTIONAL ± 1/1 ANGULAR: MACH ± 0.1 BEND ± 2.0 TWO PLACE DECIMAL ± 0.01 THREE PLACE DECIMAL ± 0.005 DO NOT SCALE DRAWING	CODE 8810		TITLE: Gearbox Mount		
	DRAWN	NAME	DATE	SIZE	DWG. NO.
		K. Patel	7/8/2013	B	AQU-INST
	MATERIAL		6061 Alloy	REV	14
	Weight: 0.13 lbs		Qty: 1	SCALE: 3:2	SHEET 5 OF 18

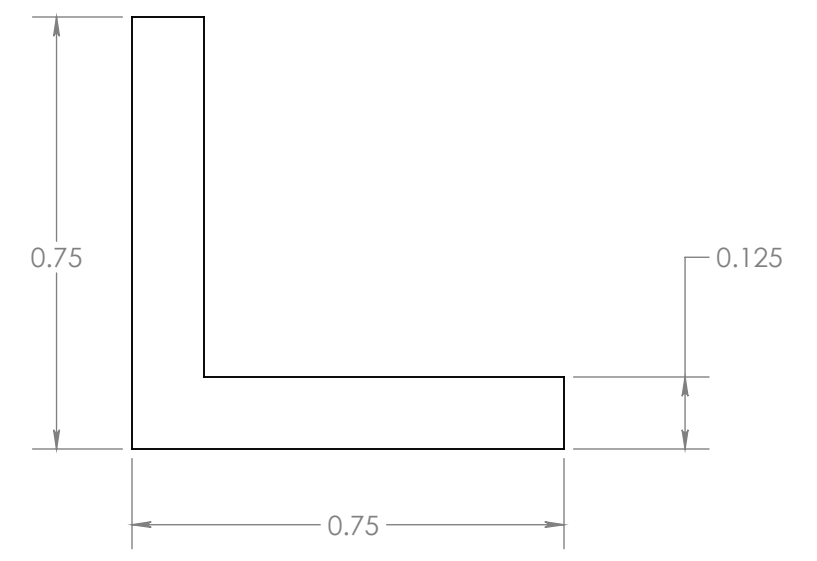
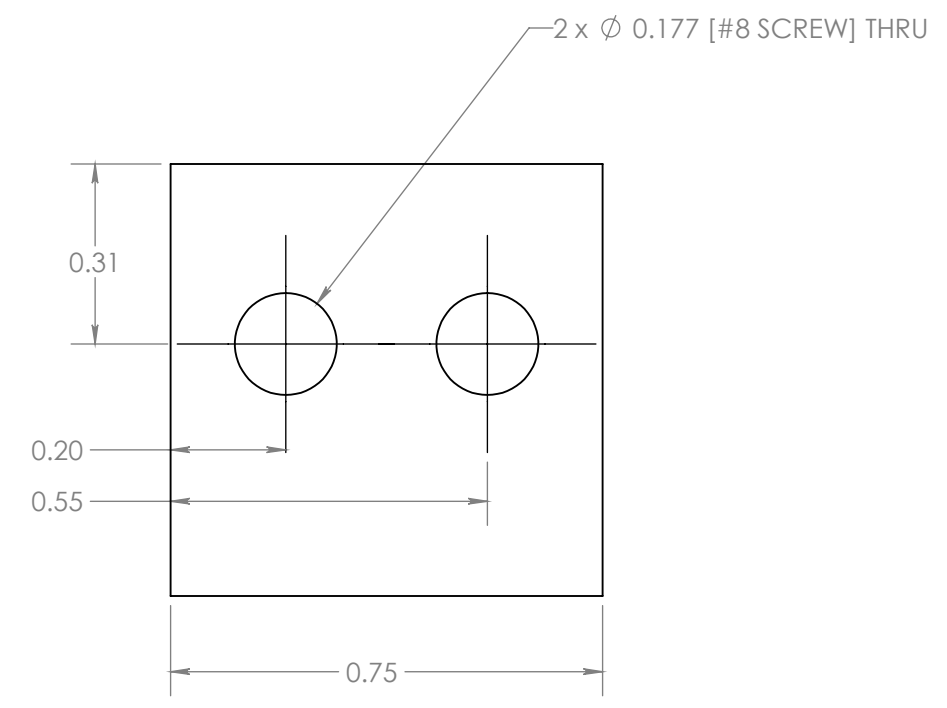
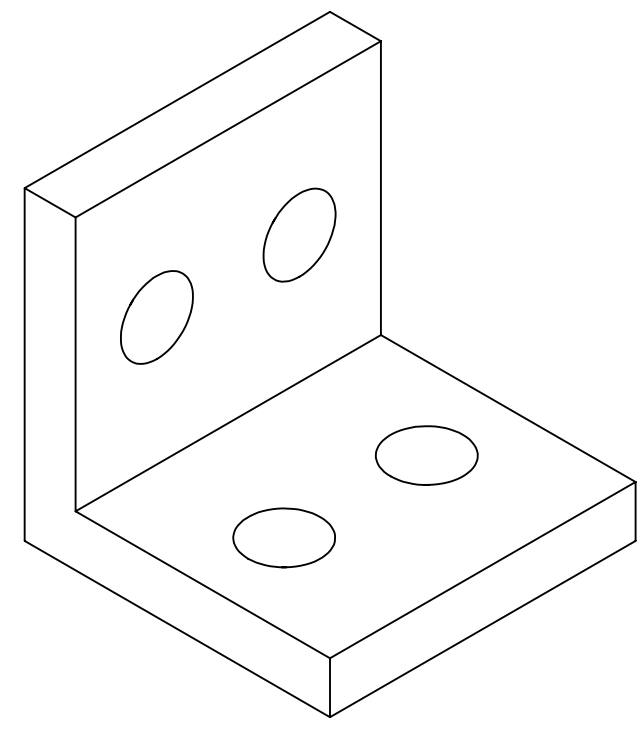
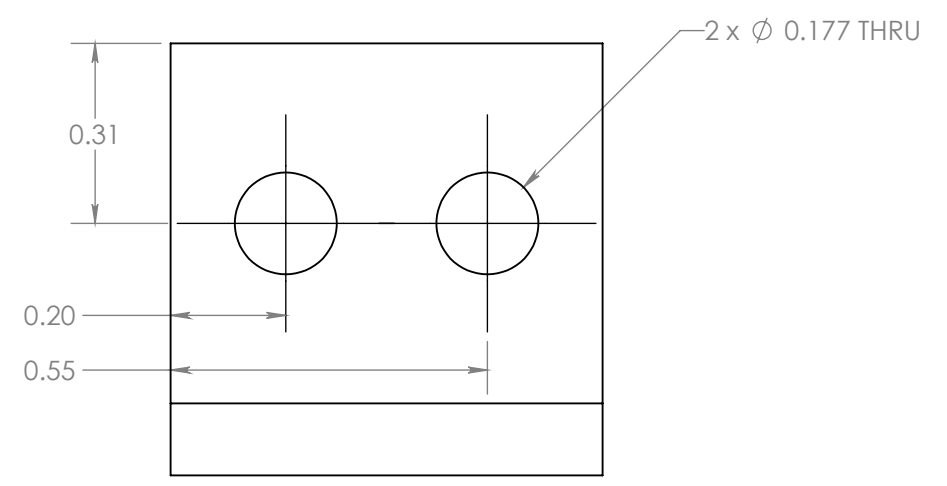


TAG	X LOC	Y LOC	SIZE
A1	-1.399	-0.631	Ø 0.194 THRU ALL
A2	-1.049	-0.631	Ø 0.194 THRU ALL
A3	-1.049	-1.756	Ø 0.194 THRU ALL
A4	-0.699	-1.755	Ø 0.194 THRU ALL
A5	0.701	-1.754	Ø 0.194 THRU ALL
A6	1.051	-0.629	Ø 0.194 THRU ALL
A7	1.051	-1.754	Ø 0.194 THRU ALL
A8	1.401	-0.629	Ø 0.194 THRU ALL
B1	0.000	1.300	Ø 0.177 THRU
C1	0.000	0.000	Ø 1.100 THRU

UNLESS OTHERWISE SPECIFIED:		CODE 8810		TITLE: Alignment Disc	
DIMENSIONS ARE IN INCHES		NAME	DATE	SIZE	DWG. NO.
TOLERANCES:		DRAWN	7/8/2013		
FRACTIONAL ± 1/1		MATERIAL		REV	14
ANGULAR: MACH ± 0.1 BEND ± 2.0		6061 Alloy			
TWO PLACE DECIMAL ± 0.01		Weight: 0.23 lbs		SHEET 6 OF 18	
THREE PLACE DECIMAL ± 0.005					
DO NOT SCALE DRAWING					

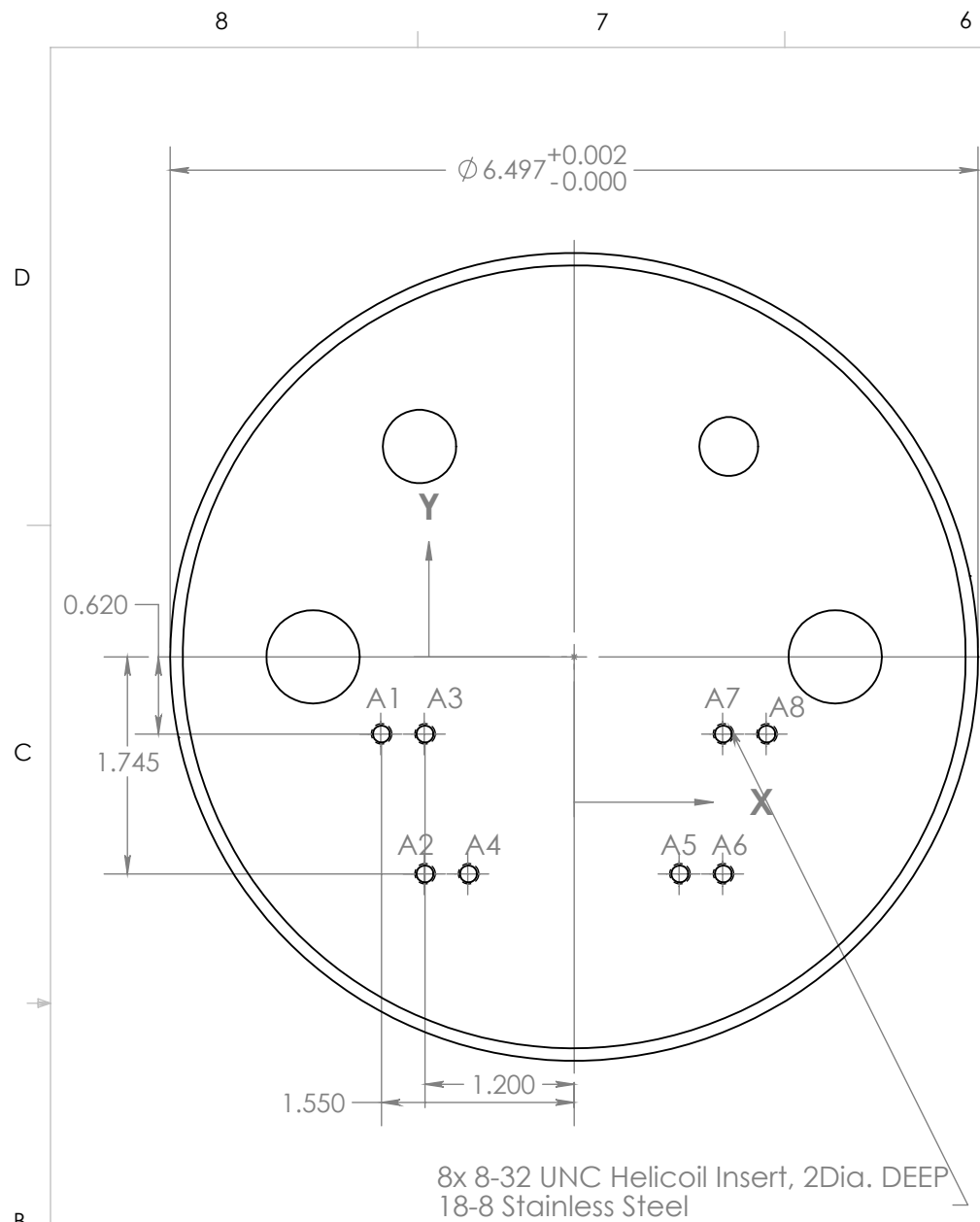
8 7 6 5 4 3 2 1

D
C
B
A



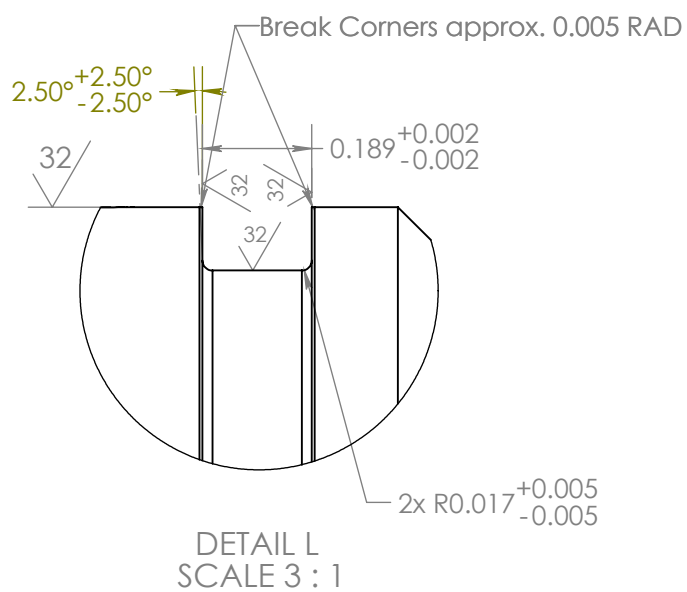
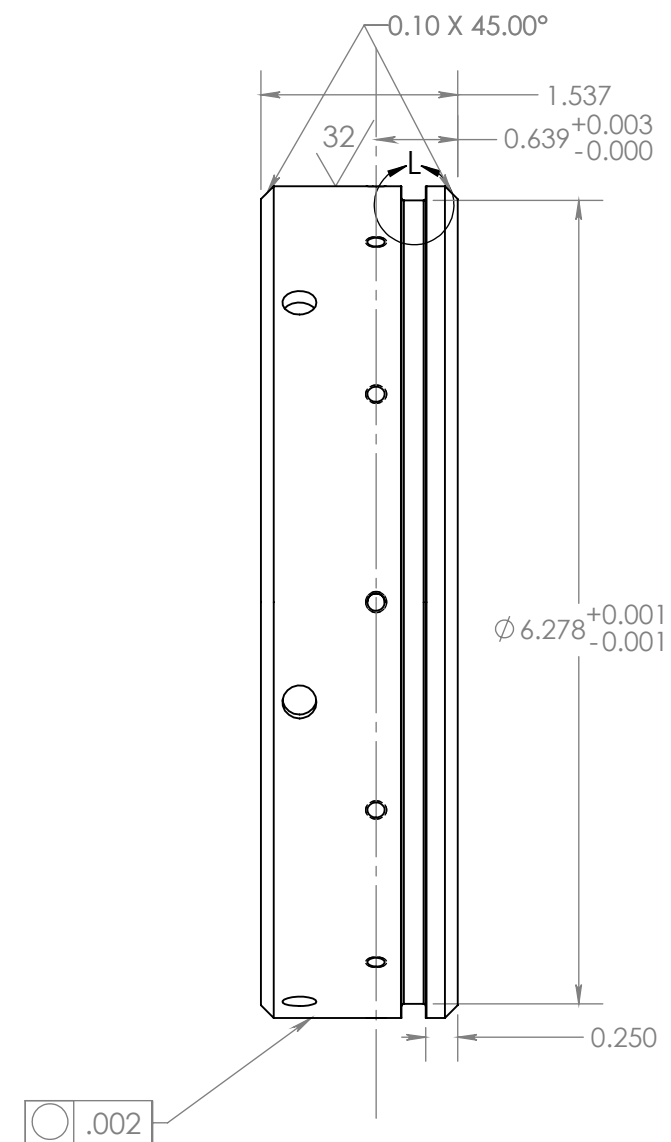
8 7 6 5 4 3 2 1

UNLESS OTHERWISE SPECIFIED: DIMENSIONS ARE IN INCHES TOLERANCES: FRACTIONAL $\pm 1/1$ ANGULAR: MACH ± 0.1 BEND ± 2.0 TWO PLACE DECIMAL ± 0.01 THREE PLACE DECIMAL ± 0.005 DO NOT SCALE DRAWING	CODE 8810		TITLE: Angle Brackets		
	NAME	DATE	SIZE B	DWG. NO. AQU-INST	REV 14
	DRAWN K. Patel	7/8/2013			
	MATERIAL 6061 Alloy	Weight: 0.01 lbs		Qty: 8	SCALE: 3:1



8x 8-32 UNC Helicoil Insert, 2Dia. DEEP
18-8 Stainless Steel

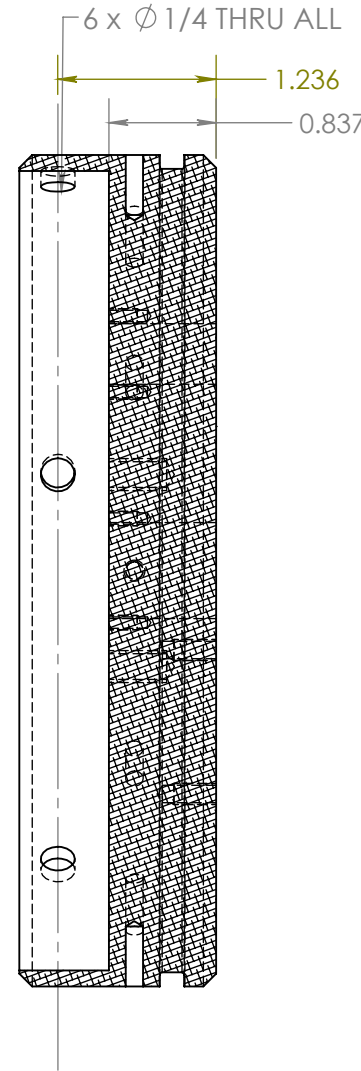
TAG	X LOC	Y LOC	SIZE
A1	-1.550	-.620	ϕ 0.136 ∇ 0.420 8-32 UNC ∇ 0.330
A2	-1.200	-1.745	ϕ 0.136 ∇ 0.420 8-32 UNC ∇ 0.330
A3	-1.200	-.620	ϕ 0.136 ∇ 0.420 8-32 UNC ∇ 0.330
A4	-.850	-1.745	ϕ 0.136 ∇ 0.420 8-32 UNC ∇ 0.330
A5	.850	-1.745	ϕ 0.136 ∇ 0.420 8-32 UNC ∇ 0.330
A6	1.200	-1.745	ϕ 0.136 ∇ 0.420 8-32 UNC ∇ 0.330
A7	1.200	-.620	ϕ 0.136 ∇ 0.420 8-32 UNC ∇ 0.330
A8	1.550	-.620	ϕ 0.136 ∇ 0.420 8-32 UNC ∇ 0.330



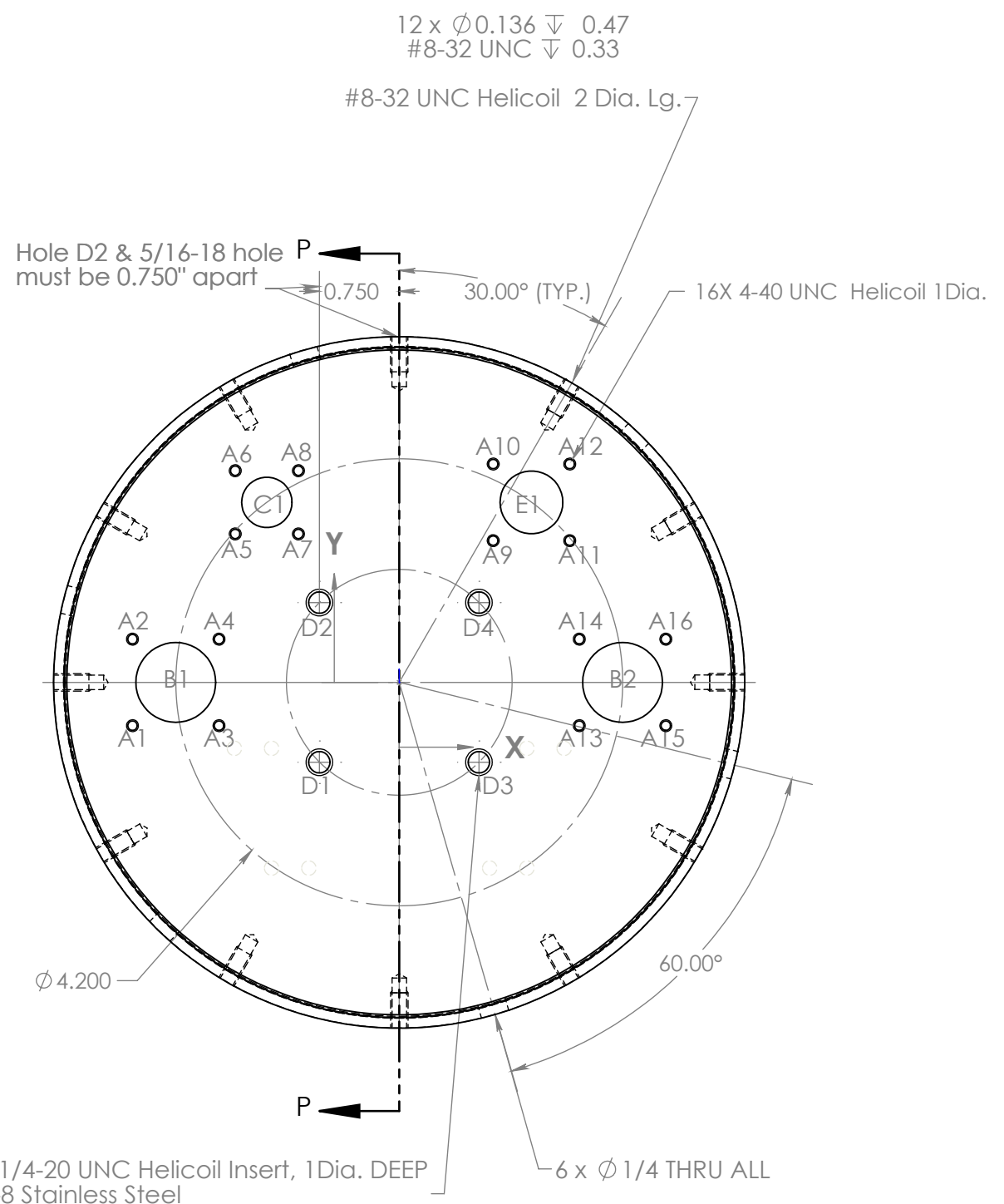
NOTE: SEE FWD BULKHEAD SEAL PAGE 2 FOR ADDITIONAL DIMENSIONS

UNLESS OTHERWISE SPECIFIED:		CODE 8810		TITLE: FWD Bulkhead Seal Pg. 1 of 2	
DIMENSIONS ARE IN INCHES		NAME	DATE	SIZE	DWG. NO.
TOLERANCES:		DRAWN	K. Patel	7/8/2013	REV
FRACTIONAL \pm 1/1		MATERIAL		B	AQU-INST
ANGULAR: MACH \pm 0.1 BEND \pm 2.0		6061 Alloy		Weight: 2.68 lbs	Qty: 1
TWO PLACE DECIMAL \pm 0.01		SCALE: 2:3		SHEET 8 OF 18	
THREE PLACE DECIMAL \pm 0.005		DO NOT SCALE DRAWING			

TAG	X LOC	Y LOC	SIZE
A1	-2.51	-.41	Ø 0.089 √ 0.300 4-40 UNC √ 0.220
A2	-2.51	.41	Ø 0.089 √ 0.300 4-40 UNC √ 0.220
A3	-1.69	-.41	Ø 0.089 √ 0.300 4-40 UNC √ 0.220
A4	-1.69	.41	Ø 0.089 √ 0.300 4-40 UNC √ 0.220
A5	-1.54	1.40	Ø 0.089 √ 0.300 4-40 UNC √ 0.220
A6	-1.54	1.99	Ø 0.089 √ 0.300 4-40 UNC √ 0.220
A7	-.95	1.40	Ø 0.089 √ 0.300 4-40 UNC √ 0.220
A8	-.95	1.99	Ø 0.089 √ 0.300 4-40 UNC √ 0.220
A9	.88	1.33	Ø 0.089 √ 0.300 4-40 UNC √ 0.220
A10	.88	2.05	Ø 0.089 √ 0.300 4-40 UNC √ 0.220
A11	1.60	1.33	Ø 0.089 √ 0.300 4-40 UNC √ 0.220
A12	1.60	2.05	Ø 0.089 √ 0.300 4-40 UNC √ 0.220
A13	1.69	-.41	Ø 0.089 √ 0.300 4-40 UNC √ 0.220
A14	1.69	.41	Ø 0.089 √ 0.300 4-40 UNC √ 0.220
A15	2.51	-.41	Ø 0.089 √ 0.300 4-40 UNC √ 0.220
A16	2.51	.41	Ø 0.089 √ 0.300 4-40 UNC √ 0.220
B1	-2.10	.00	Ø 0.750 THRU
B2	2.10	.00	Ø 0.750 THRU
C1	-1.24	1.69	Ø 0.473 THRU
E1	1.24	1.69	Ø 0.590 THRU
D1	-.75	-.75	Ø 0.201 √ 0.450 1/4-20 UNC √ 0.500
D2	-.75	.75	Ø 0.201 √ 0.450 1/4-20 UNC √ 0.500
D3	.75	-.75	Ø 0.201 √ 0.450 1/4-20 UNC √ 0.500
D4	.75	.75	Ø 0.201 √ 0.450 1/4-20 UNC √ 0.500

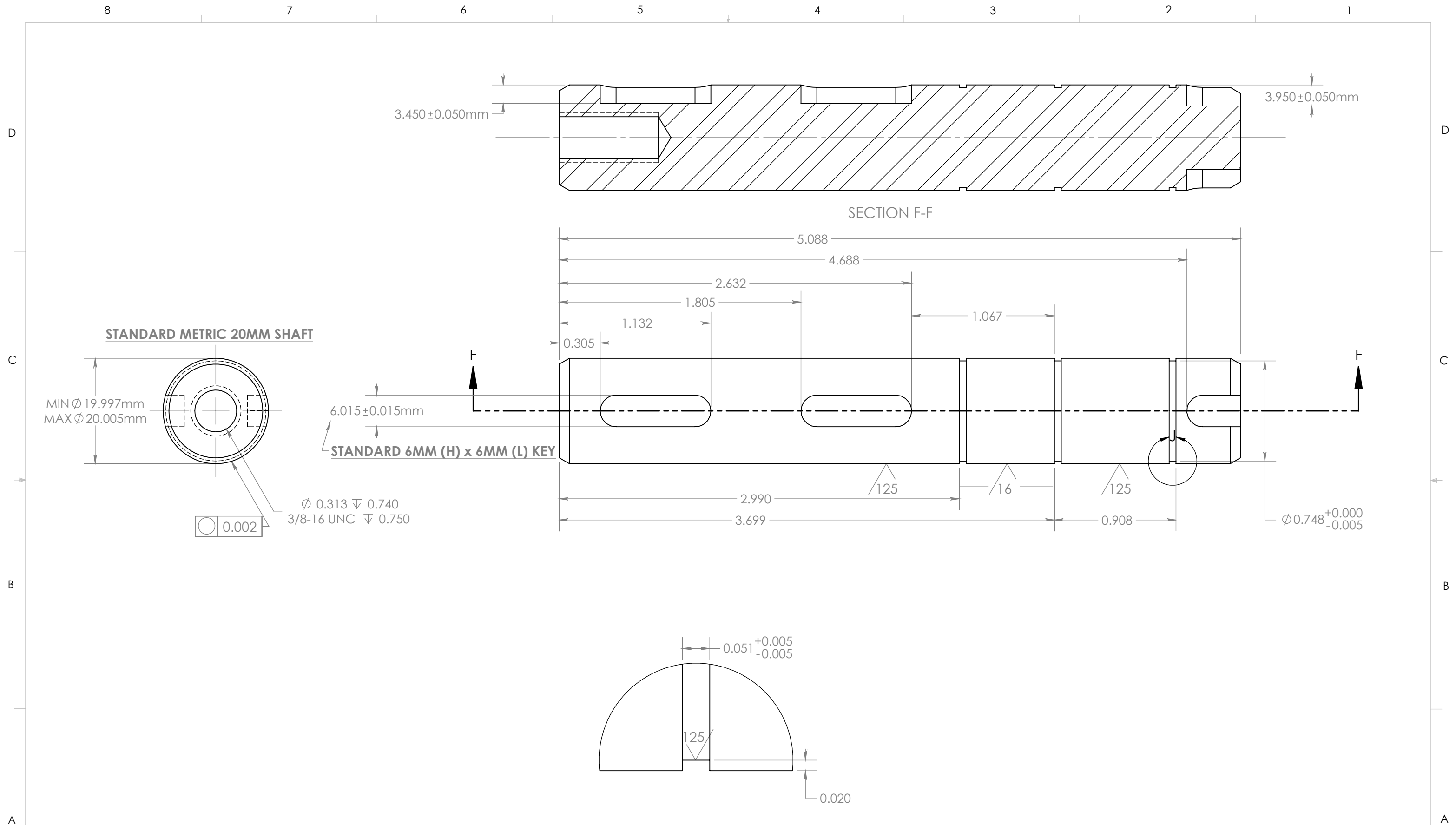


SECTION P-P



4x 1/4-20 UNC Helicoil Insert, 1Dia. DEEP
18-8 Stainless Steel

UNLESS OTHERWISE SPECIFIED: DIMENSIONS ARE IN INCHES TOLERANCES: FRACTIONAL ± 1/1 ANGULAR: MACH ± 0.1 BEND ± 2.0 TWO PLACE DECIMAL ± 0.01 THREE PLACE DECIMAL ± 0.005 DO NOT SCALE DRAWING	CODE 8810		TITLE: FWD Bulkhead Seal Pg. 2 of 2	
	NAME	DATE	SIZE	DWG. NO.
	DRAWN	K. Patel	7/8/2013	B AQU-INST
	MATERIAL	6061 Alloy		REV 14
	Weight: 2.68 lbs	Qty: 1	SCALE: 2:3	SHEET 9 OF 18

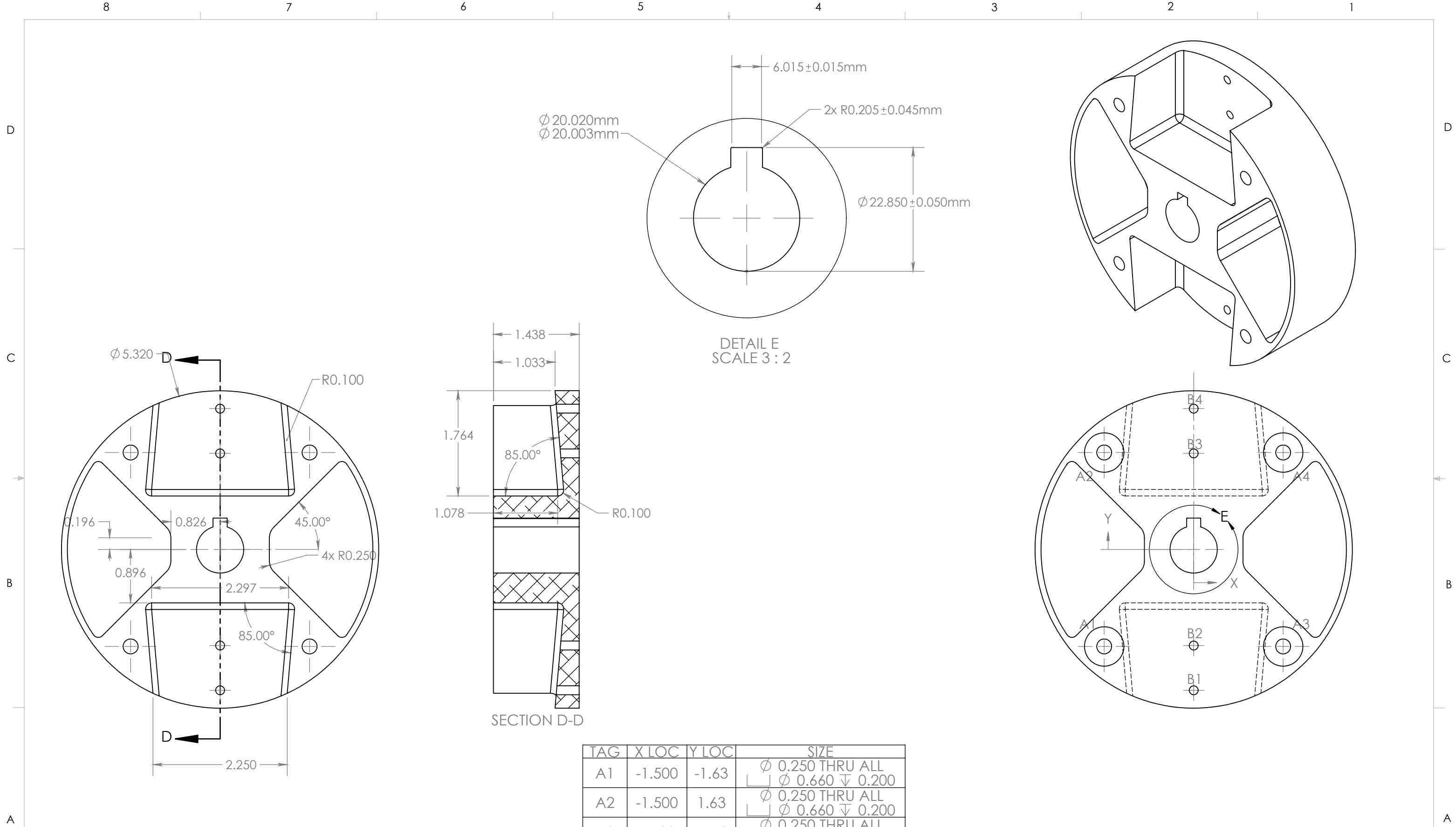


NOTE;
ALL THREE RETAINING RING GROOVES ARE THE SAME

DETAIL J
SCALE 6 : 1

MATERIAL: 17-4 PH PRECISION GROUND STAINLESS STEEL

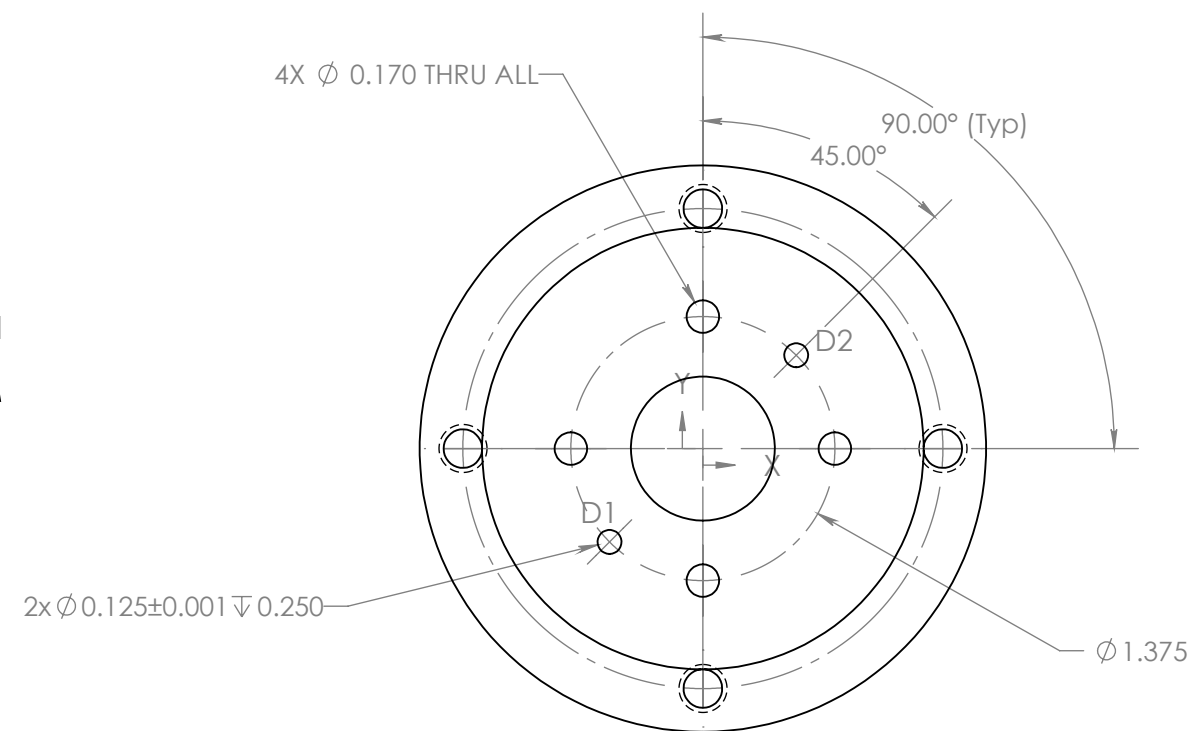
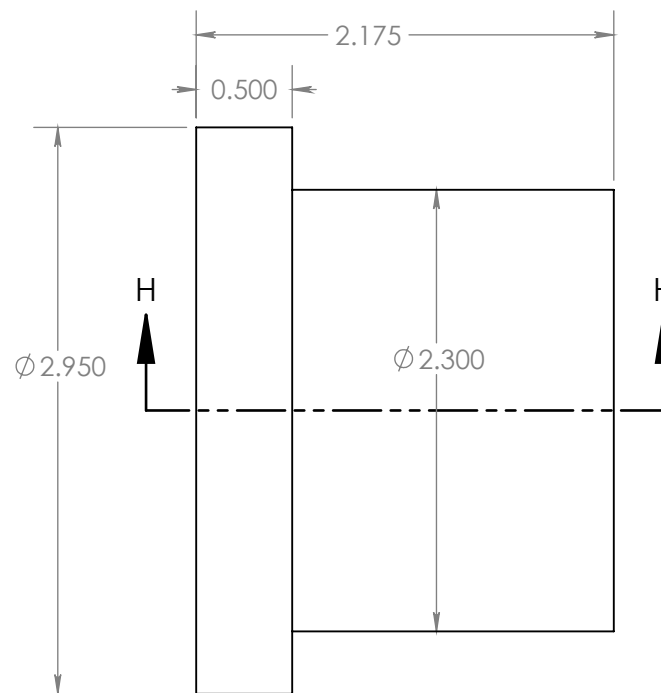
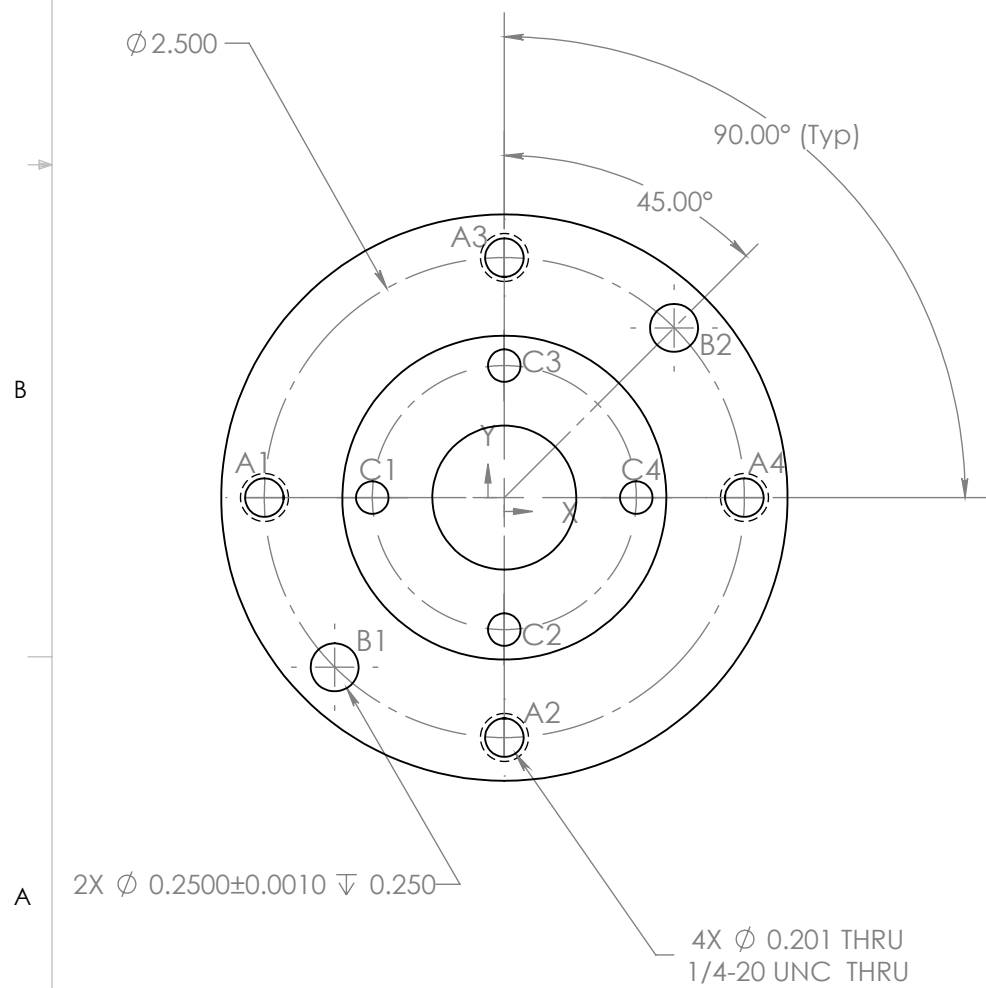
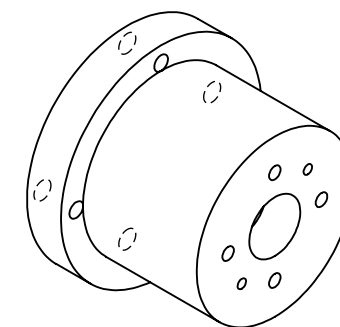
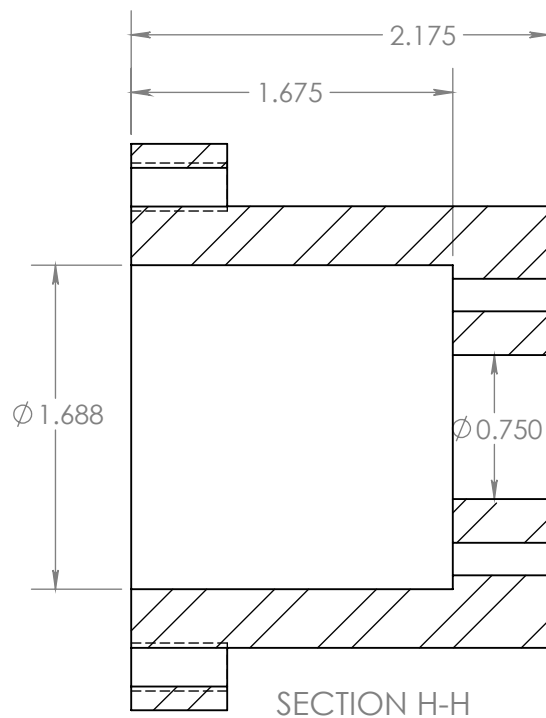
UNLESS OTHERWISE SPECIFIED: DIMENSIONS ARE IN INCHES TOLERANCES: FRACTIONAL ± 1/1 ANGULAR: MACH ± 0.1 BEND ± 2.0 TWO PLACE DECIMAL ± 0.01 THREE PLACE DECIMAL ± 0.005 DO NOT SCALE DRAWING	CODE 8810		TITLE: Main Shaft	
	DRAWN	NAME	DATE	REV
	K. Patel	7/8/2013	B	14
	Weight: 0.65 lbs	Qty: 1	SCALE: 3:2	SHEET 10 OF 18



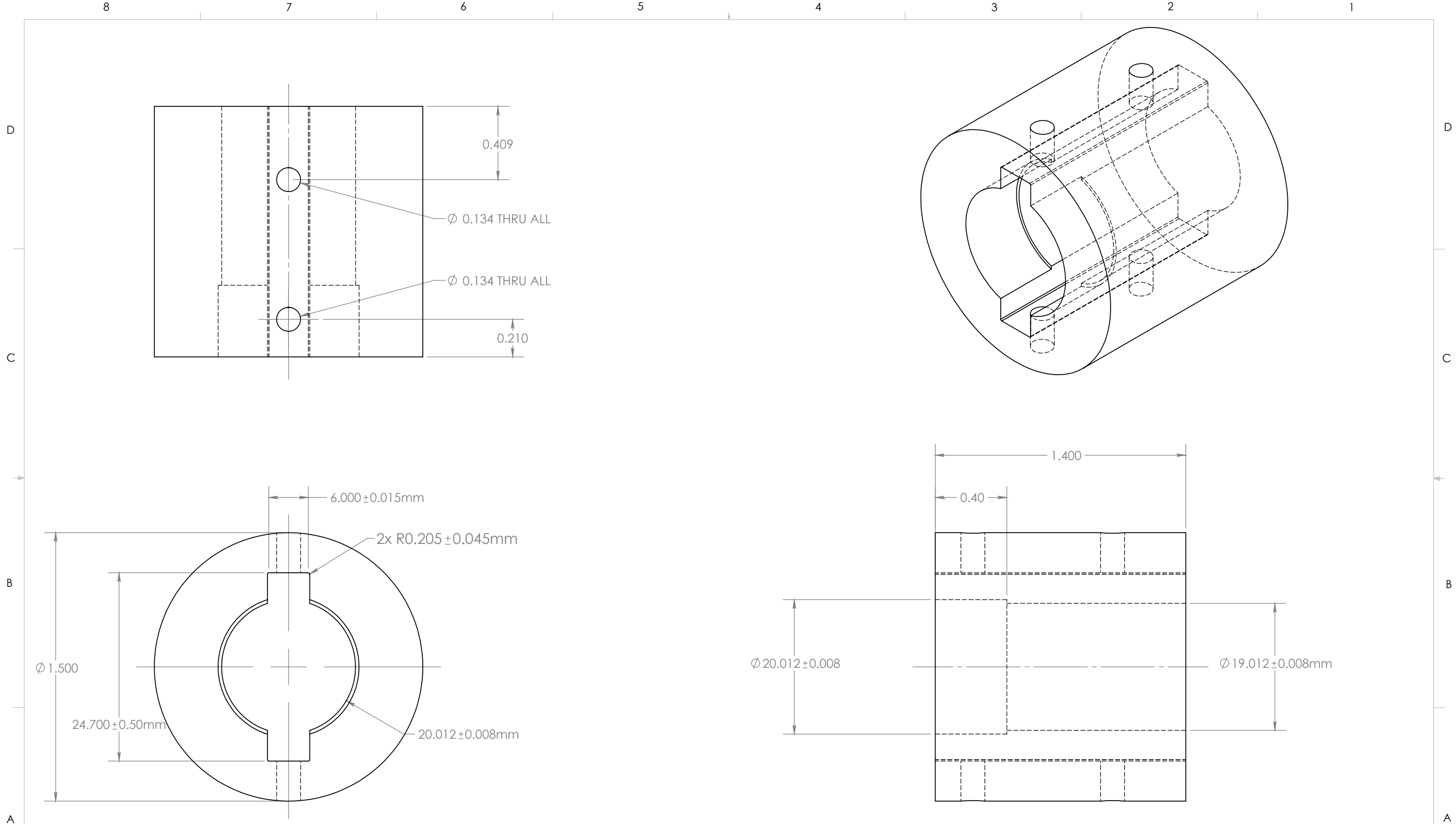
TAG	X LOC	Y LOC	SIZE
A1	-1.500	-1.63	Ø 0.250 THRU ALL Ø 0.660 ∇ 0.200
A2	-1.500	1.63	Ø 0.250 THRU ALL Ø 0.660 ∇ 0.200
A3	1.500	-1.63	Ø 0.250 THRU ALL Ø 0.660 ∇ 0.200
A4	1.500	1.63	Ø 0.250 THRU ALL Ø 0.660 ∇ 0.200
B1	-.000	-2.36	Ø 0.150 THRU ALL
B2	-.000	-1.61	Ø 0.150 THRU ALL
B3	-.000	1.61	Ø 0.150 THRU ALL
B4	-.000	2.36	Ø 0.150 THRU ALL

UNLESS OTHERWISE SPECIFIED:		CODE 8810		TITLE: Hub		
DIMENSIONS ARE IN INCHES		NAME	DATE	SIZE B	DWG. NO. AQU-INST	REV 14
TOLERANCES:		DRAWN K. Patel	7/8/2013			
FRACTIONAL ± 1/1		MATERIAL 6061 Alloy		Qty: 2	SCALE: 2:3	SHEET 11 OF 18
ANGULAR: MACH ± 0.1 BEND ± 2.0		Weight: 1.20 lbs				
TWO PLACE DECIMAL ± 0.01						
THREE PLACE DECIMAL ± 0.005						
DO NOT SCALE DRAWING						

TAG	X LOC	Y LOC	SIZE
A1	-1.250	-.000	ϕ 0.201 ∇ 0.500 1/4-20 UNC ∇ 0.500
A2	.000	-1.250	ϕ 0.201 ∇ 0.500 1/4-20 UNC ∇ 0.500
A3	.000	1.250	ϕ 0.201 ∇ 0.500 1/4-20 UNC ∇ 0.500
A4	1.250	.000	ϕ 0.201 ∇ 0.500 1/4-20 UNC ∇ 0.500
B1	-.884	-.884	ϕ 0.250 \pm 0.001 ∇ 0.250
B2	.884	.884	ϕ 0.250 \pm 0.001 ∇ 0.250
C1	-.688	-.000	ϕ 0.170 THRU ALL
C2	-.000	-.688	ϕ 0.170 THRU ALL
C3	-.000	.688	ϕ 0.170 THRU ALL
C4	.688	.000	ϕ 0.170 THRU ALL
D1	-.486	-.486	ϕ 0.125 \pm 0.001 ∇ 0.250
D2	.486	.486	ϕ 0.125 \pm 0.001 ∇ 0.250



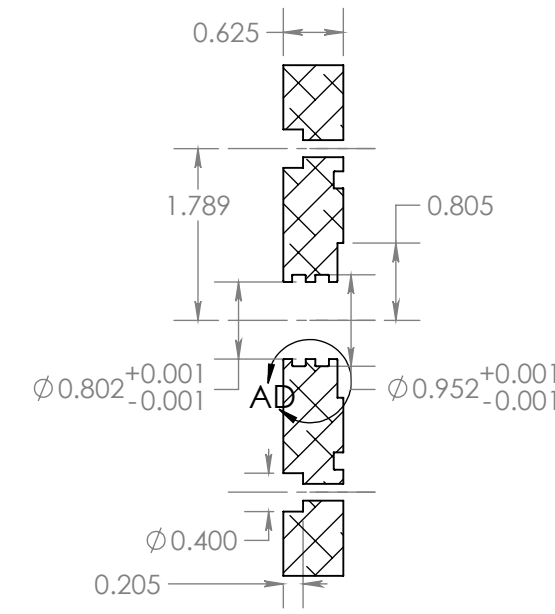
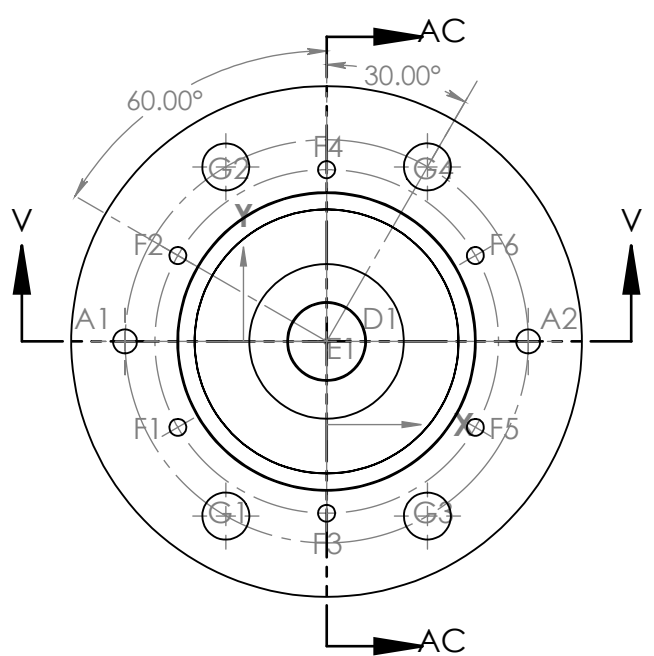
UNLESS OTHERWISE SPECIFIED: DIMENSIONS ARE IN INCHES TOLERANCES: FRACTIONAL \pm 1/1 ANGULAR: MACH \pm 0.1 BEND \pm 2.0 TWO PLACE DECIMAL \pm 0.01 THREE PLACE DECIMAL \pm 0.005 DO NOT SCALE DRAWING	CODE 8810		TITLE: Dyno Adapter			
	NAME	DATE	SIZE	DWG. NO.	REV	
	DRAWN	K. Patel	7/8/2013	B	AQU-INST	14
	MATERIAL	304 SS		Weight: 1.81 lbs	Qty: 1	SCALE: 1:1
			SHEET 12 OF 18			



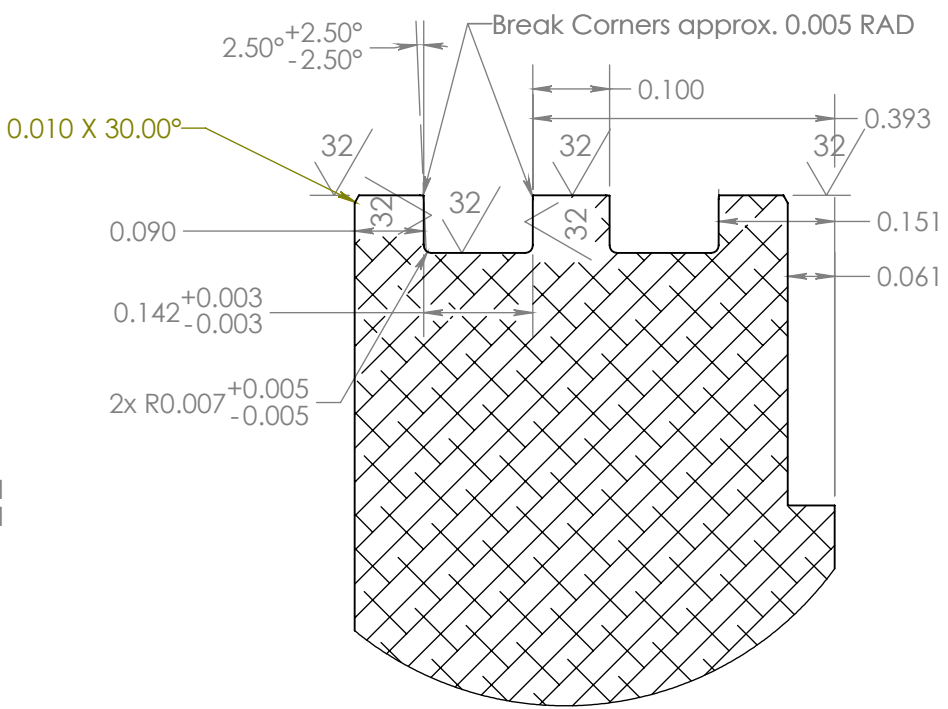
METRIC DIMENSIONS USED DUE TO METRIC KEY & SHAFT

UNLESS OTHERWISE SPECIFIED: DIMENSIONS ARE IN INCHES TOLERANCES: FRACTIONAL $\pm 1/1$ ANGULAR: MACH ± 0.1 BEND ± 2.0 TWO PLACE DECIMAL ± 0.01 THREE PLACE DECIMAL ± 0.005 DO NOT SCALE DRAWING	CODE 8810		TITLE: SHAFT-TRANSDUCER COUPLER	
	NAME	DATE	SIZE	DWG. NO.
	DRAWN K. Patel	7/8/2013	B	AQU-INST
	MATERIAL 304 SS	Weight: 0.49 lbs	Qty: 1	SCALE: 2:1
			REV 14	SHEET 13 OF 18

8 7 6 5 4 3 2 1

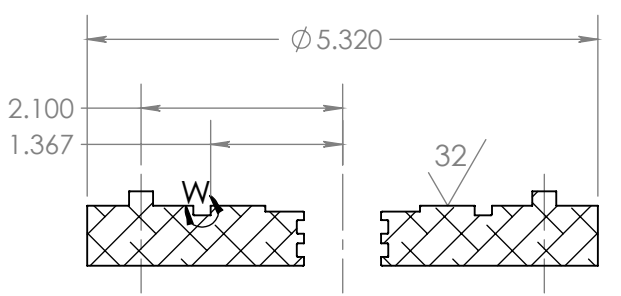
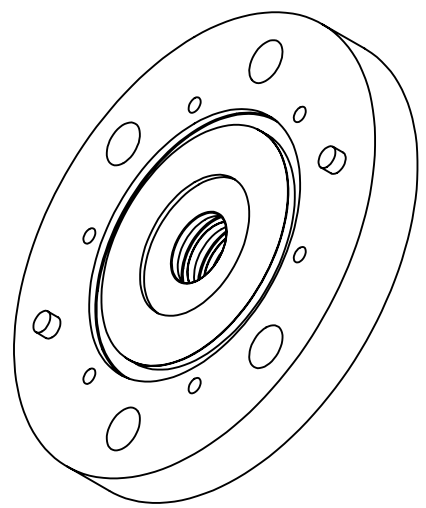


SECTION AC-AC
SCALE 1 : 2

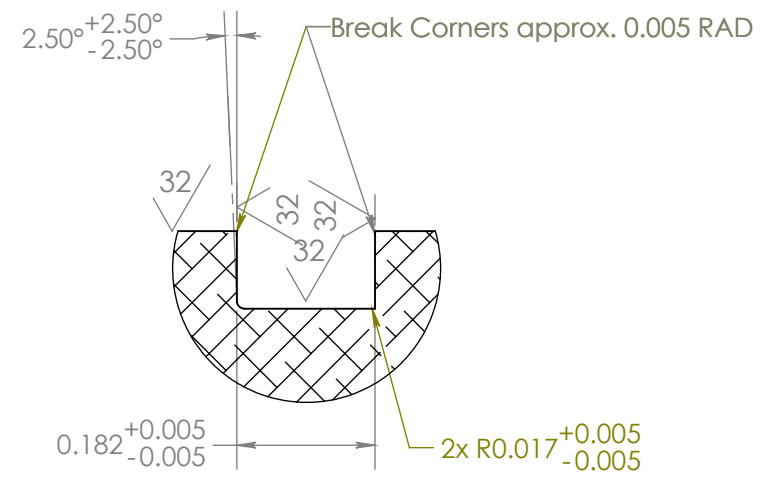


BOTH SEAL GROOVES ARE THE SAME

DETAIL AD
SCALE 4 : 1



SECTION V-V
SCALE 1 : 2



DETAIL W
SCALE 4 : 1

TAG	X LOC	Y LOC	SIZE
A1	-2.100	.000	Ø0.250 THRU
A2	2.100	.000	Ø0.250 THRU
D1	.000	.000	Ø0.802 ±0.151 └┘ Ø1.610 ±0.061
E1	.000	.000	Ø0.802 ±0.090 ✓ Ø0.822 X 120°
F1	-1.550	-.895	Ø 0.177 THRU ALL └┘ Ø 0.400 ± 0.205
F2	-1.550	.895	Ø 0.177 THRU ALL └┘ Ø 0.400 ± 0.205
F3	.000	-1.789	Ø 0.177 THRU ALL └┘ Ø 0.400 ± 0.205
F4	.000	1.789	Ø 0.177 THRU ALL └┘ Ø 0.400 ± 0.205
F5	1.550	-.895	Ø 0.177 THRU ALL └┘ Ø 0.400 ± 0.205
F6	1.550	.895	Ø 0.177 THRU ALL └┘ Ø 0.400 ± 0.205
G1	-1.050	-1.819	Ø0.490 THRU
G2	-1.050	1.819	Ø0.490 THRU
G3	1.050	-1.819	Ø0.490 THRU
G4	1.050	1.819	Ø0.490 THRU

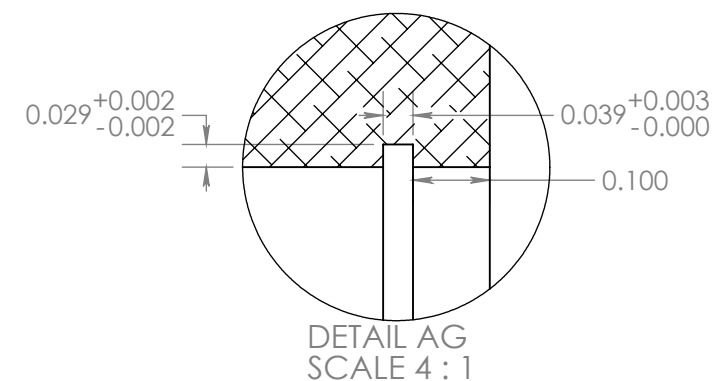
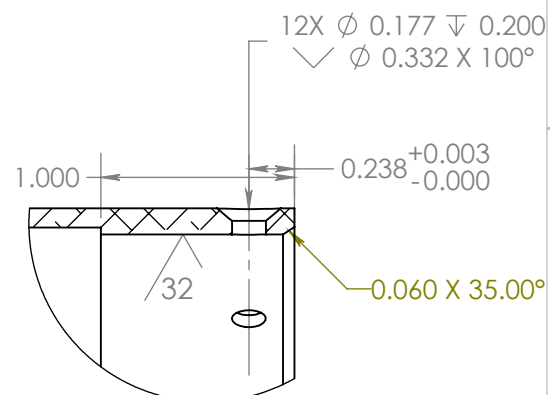
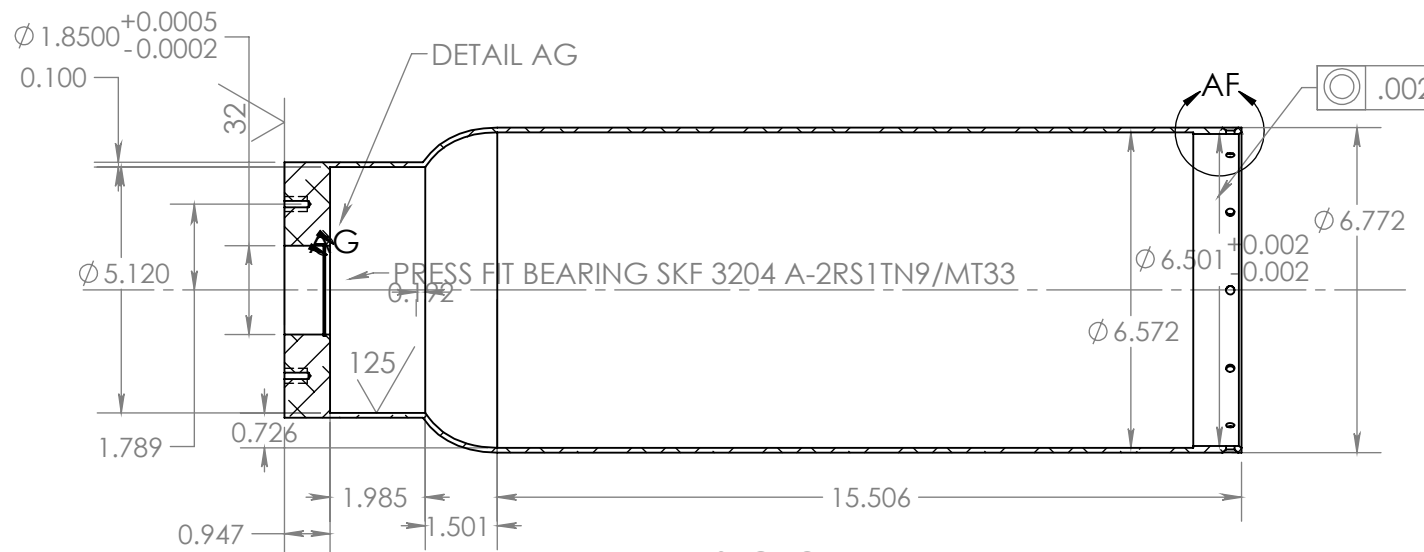
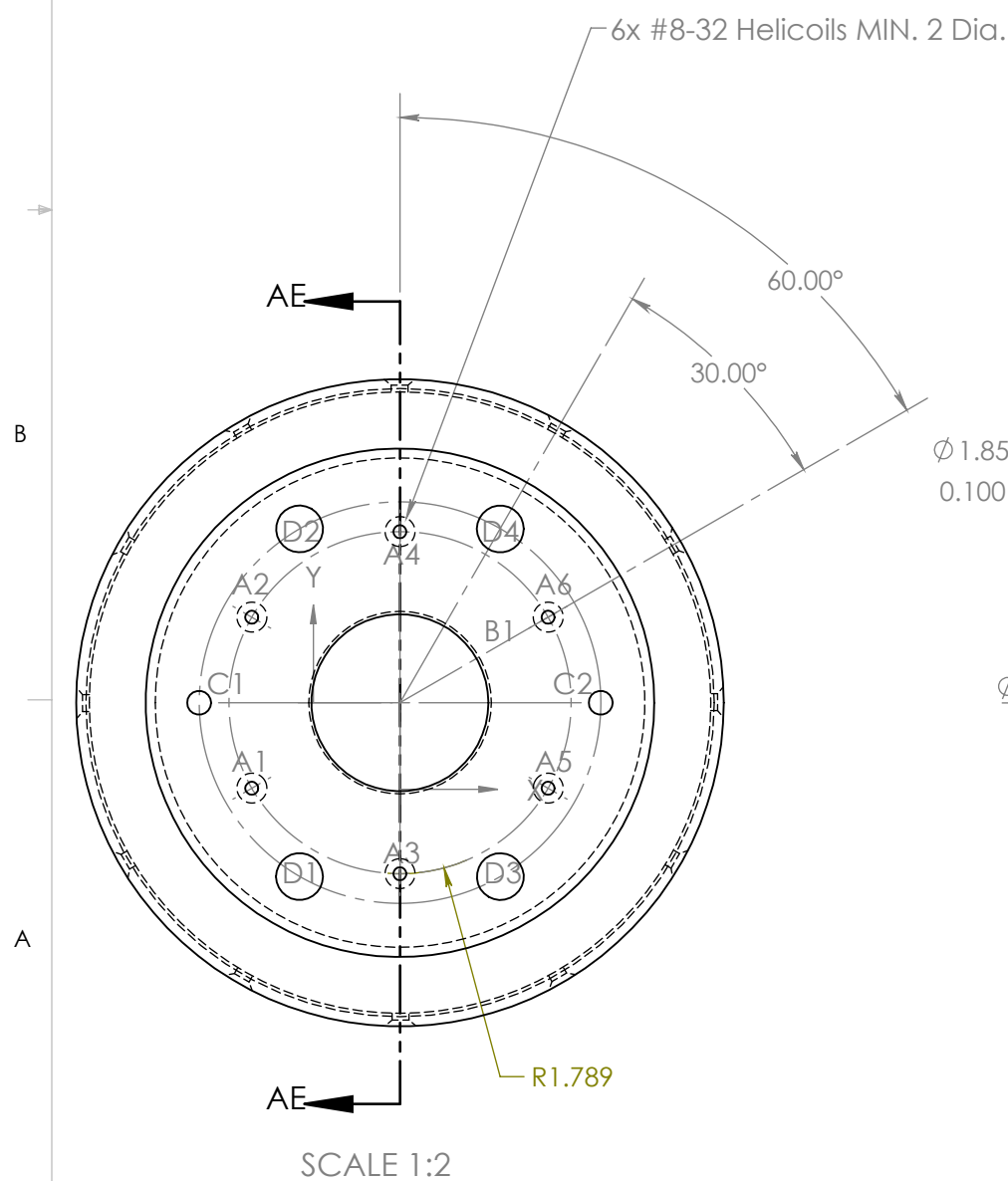
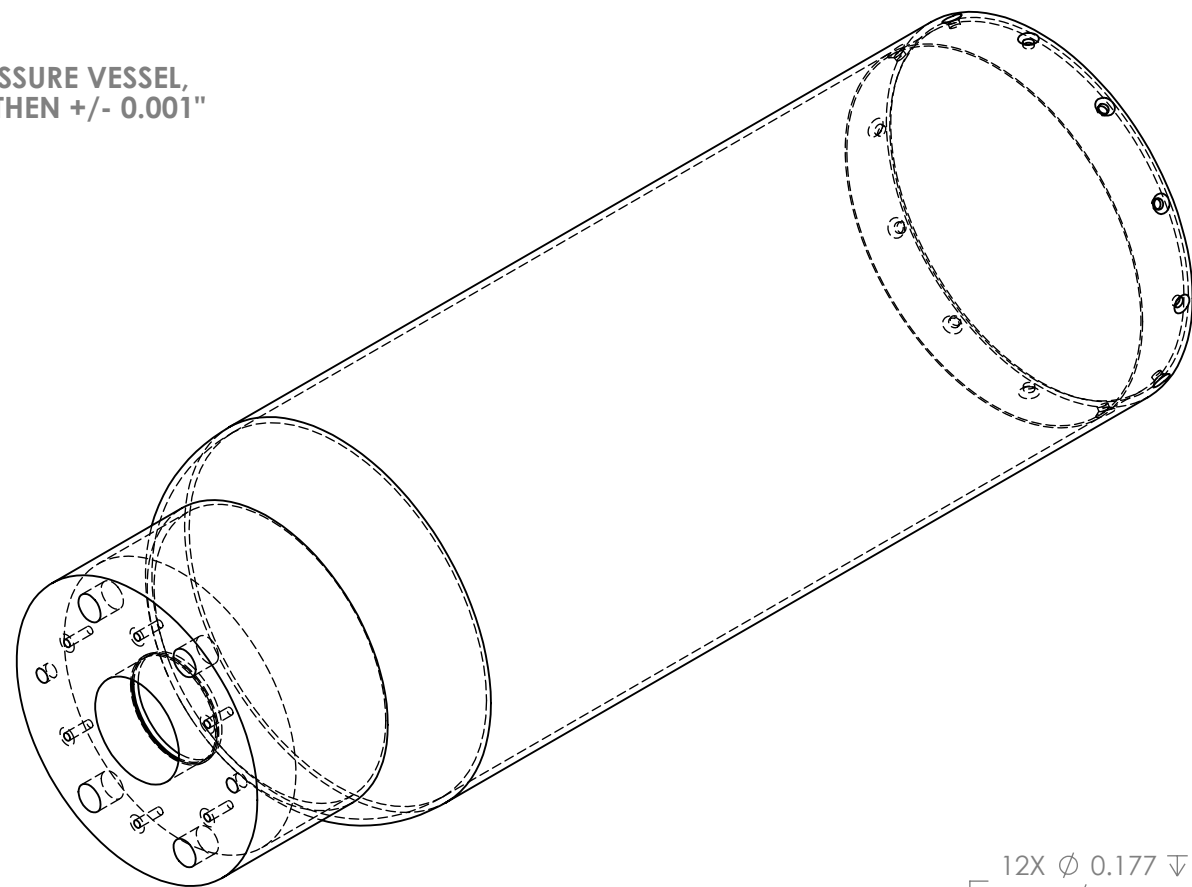
NOTE:
 1) PINS A1 & A2 ARE USED AS ALIGNMENT PINS FOR SEAL HOUSING TO PRESSURE VESSEL, THEREFORE REQUIRES A DIAMETRICAL TOLERANCE NO GREATER THEN +/- 0.001"
 2) MATCH DRILL HOLE E1 TO PRESSURE VESSEL BEARING HOUSING.

UNLESS OTHERWISE SPECIFIED:		CODE 8810		TITLE: Seal Housing	
DIMENSIONS ARE IN INCHES		NAME	DATE	SIZE	DWG. NO.
TOLERANCES:		DRAWN	K. Patel	7/8/2013	AQU-INST
FRACTIONAL ± 1/1		MATERIAL		REV	14
ANGULAR: MACH ± 0.1 BEND ± 2.0		6061 Alloy		Weight: 1.23 lbs	Qty: 1
TWO PLACE DECIMAL ± 0.01		SCALE: 1:2		SHEET 14 OF 18	
THREE PLACE DECIMAL ± 0.005		DO NOT SCALE DRAWING			

8 7 6 5 4 3 2 1

TAG	X LOC	Y LOC	SIZE
A1	-1.549	-.895	\varnothing 0.136 ∇ 0.500 8-32 UNC ∇ 0.470
A2	-1.549	.895	\varnothing 0.136 ∇ 0.500 8-32 UNC ∇ 0.470
A3	.000	-1.789	\varnothing 0.136 ∇ 0.500 8-32 UNC ∇ 0.470
A4	.000	1.789	\varnothing 0.136 ∇ 0.500 8-32 UNC ∇ 0.470
A5	1.549	-.895	\varnothing 0.136 ∇ 0.500 8-32 UNC ∇ 0.470
A6	1.549	.895	\varnothing 0.136 ∇ 0.500 8-32 UNC ∇ 0.470
B1	.000	.000	\varnothing 1.850
C1	-2.100	.000	\varnothing 0.250 ∇ 0.200
C2	2.100	.000	\varnothing 0.250 ∇ 0.200
D1	-1.050	-1.819	\varnothing 0.490 ∇ 0.500
D2	-1.050	1.819	\varnothing 0.490 ∇ 0.500
D3	1.050	-1.819	\varnothing 0.490 ∇ 0.500
D4	1.050	1.819	\varnothing 0.490 ∇ 0.500

NOTE:
1) HOLES C1 & C2 ARE USED FOR ALIGNING SEAL HOUSING TO PRESSURE VESSEL, THEREFORE REQUIRES A DIAMETRICAL TOLERANCE NO GREATER THEN +/- 0.001"
2) MATCH DRILL HOLE E1 TO PRESSURE VESSEL BEARING HOUSING.

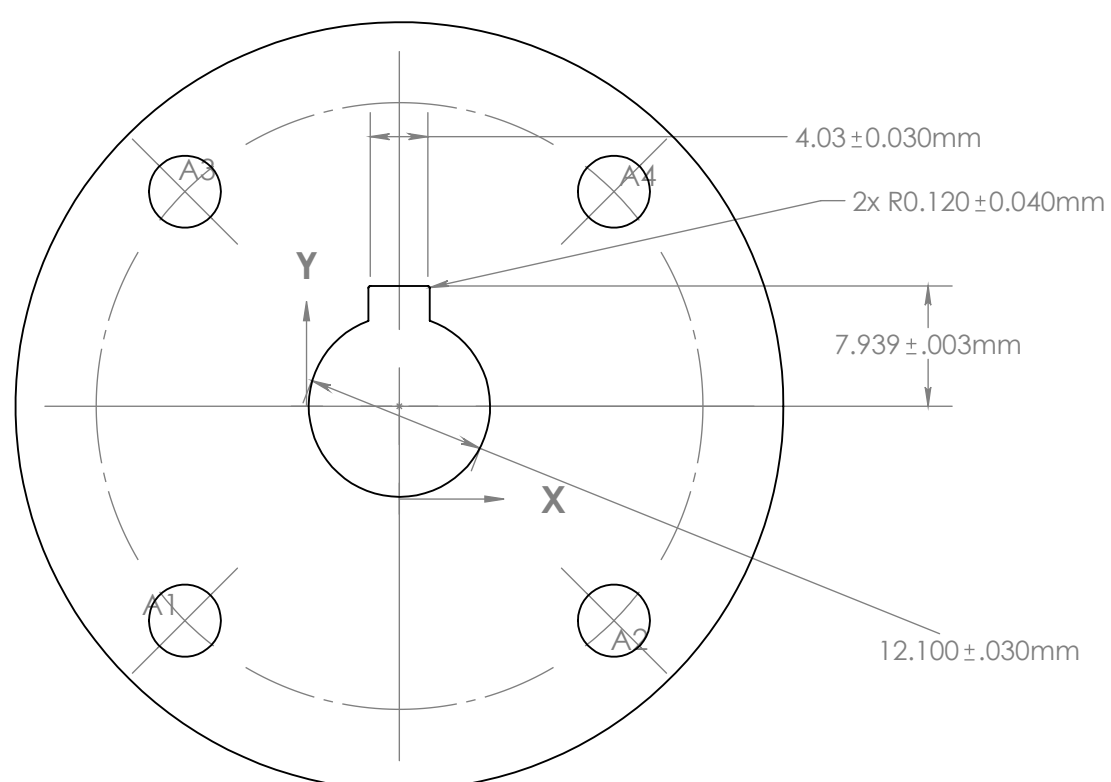
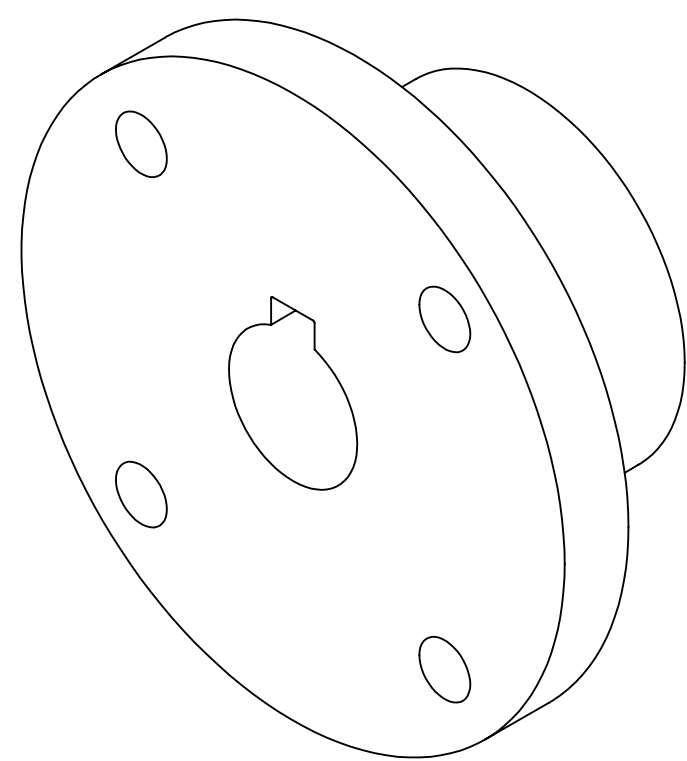
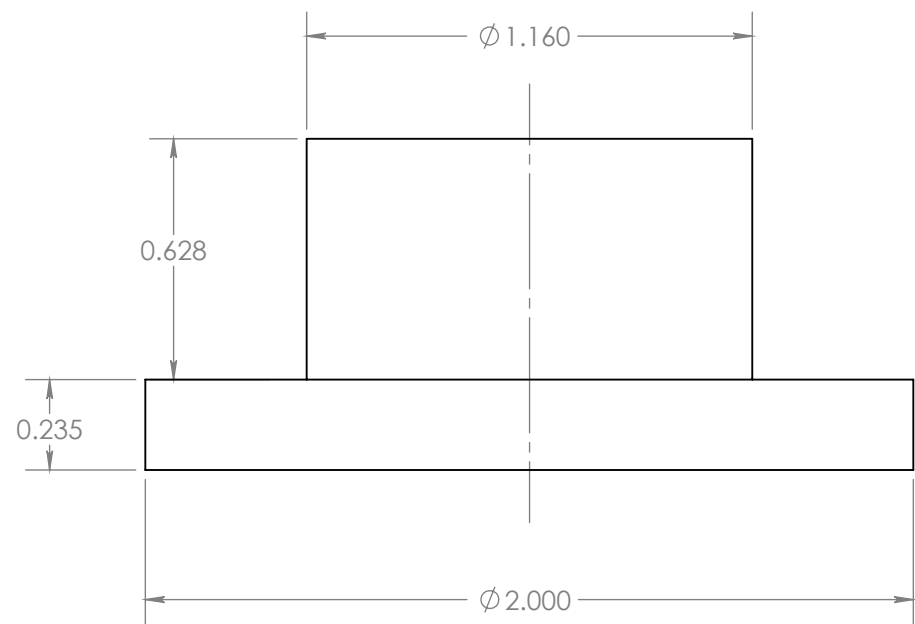


SECTION AE-AE
SCALE 1 : 4

UNLESS OTHERWISE SPECIFIED: DIMENSIONS ARE IN INCHES TOLERANCES: FRACTIONAL \pm 1/1 ANGULAR: MACH \pm 0.1 BEND \pm 2.0 TWO PLACE DECIMAL \pm 0.01 THREE PLACE DECIMAL \pm 0.005 DO NOT SCALE DRAWING	CODE 8810		TITLE: Pressure Vessel		
	NAME	DATE	SIZE	DWG. NO.	REV
	DRAWN K. Patel	7/8/2013	B	AQU-INST	14
	MATERIAL 6061 Alloy	Weight: 2.59 lbs	Qty: 1	SCALE: 1:3	SHEET 15 OF 18

8 7 6 5 4 3 2 1

D
C
B
A

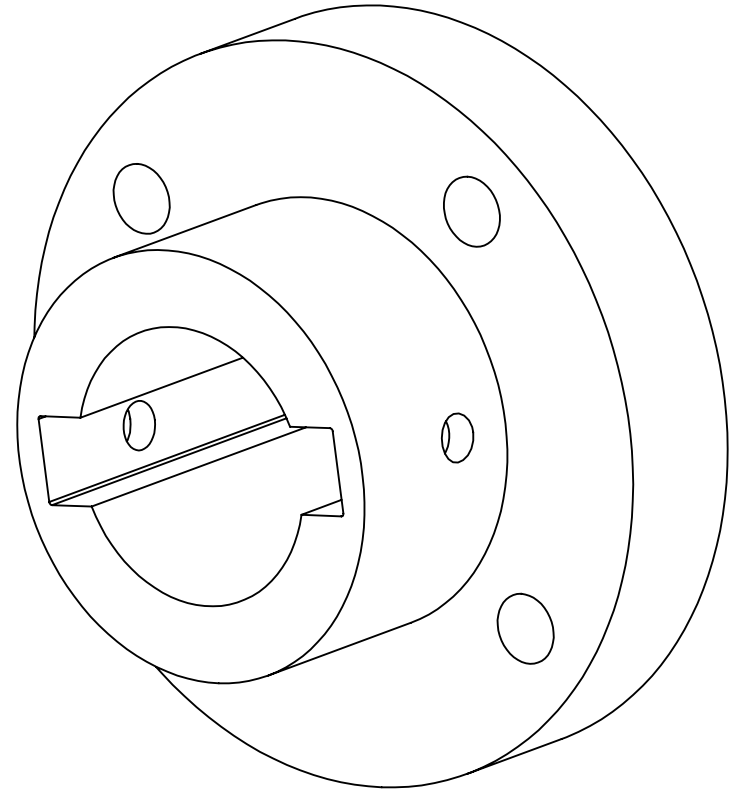
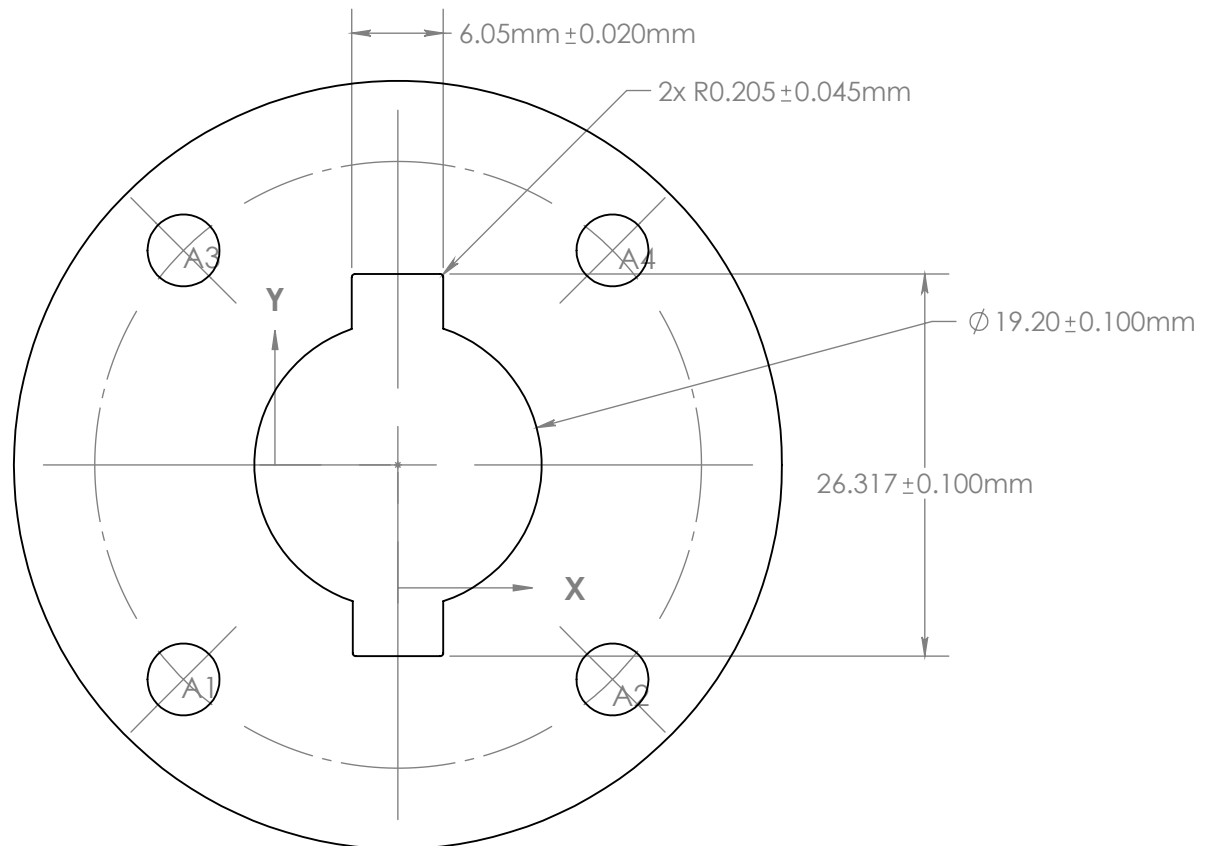


METRIC DIMENSIONS USED DUE TO METRIC KEY & SHAFT

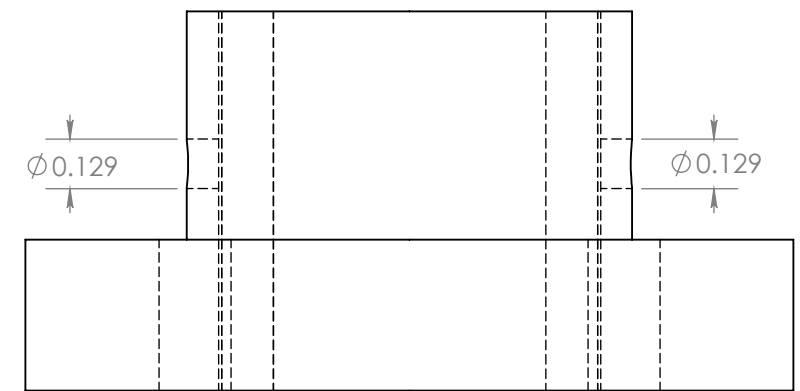
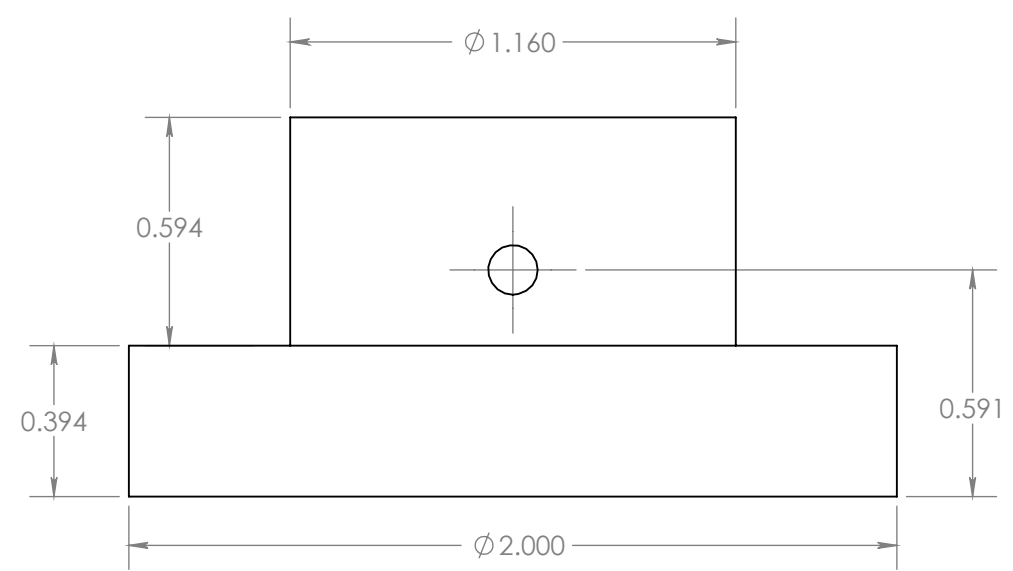
TAG	X LOC	Y LOC	SIZE
A1	-.559	-.559	ϕ 0.188 THRU ALL
A2	.559	-.559	ϕ 0.188 THRU ALL
A3	-.559	.559	ϕ 0.188 THRU ALL
A4	.559	.559	ϕ 0.188 THRU ALL

UNLESS OTHERWISE SPECIFIED:		CODE 8810		TITLE: Gearbox Split Coupling	
DIMENSIONS ARE IN INCHES		NAME	DATE	SIZE B	DWG. NO. AQU-INST
TOLERANCES:		DRAWN	7/8/2013		
FRACTIONAL $\pm 1/1$		MATERIAL		SCALE:2:1	
ANGULAR: MACH ± 0.1 BEND ± 2.0		304 SS		SHEET 16 OF 18	
TWO PLACE DECIMAL ± 0.01		Weight: 0.36 lbs		Qty: 1	
THREE PLACE DECIMAL ± 0.005		DO NOT SCALE DRAWING			

8 7 6 5 4 3 2 1

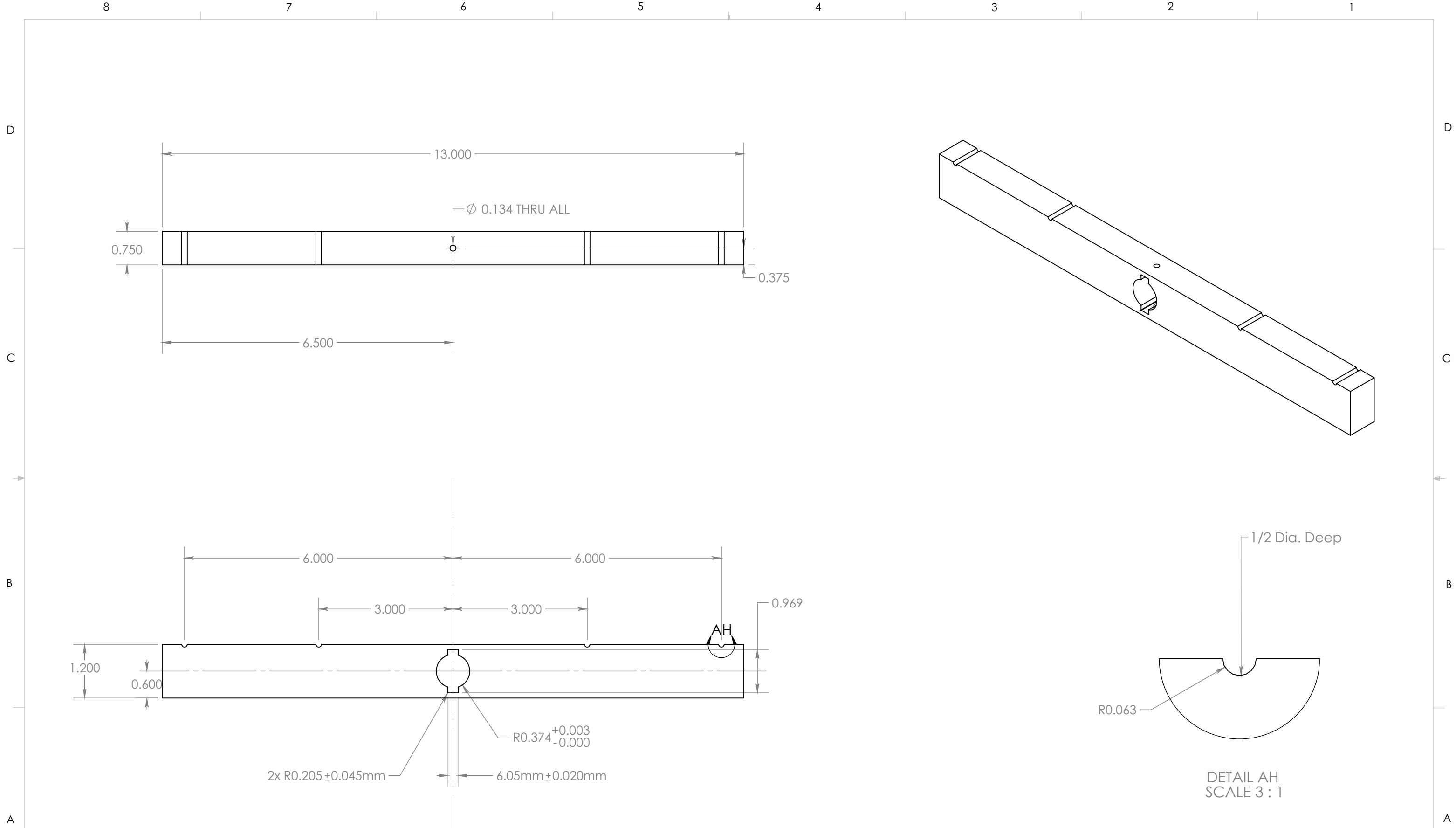


METRIC DIMENSIONS USED DUE TO METRIC KEY & SHAFT



TAG	X LOC	Y LOC	SIZE
A1	-.559	-.559	Ø 0.188 THRU ALL
A2	.559	-.559	Ø 0.188 THRU ALL
A3	-.559	.559	Ø 0.188 THRU ALL
A4	.559	.559	Ø 0.188 THRU ALL

UNLESS OTHERWISE SPECIFIED:		CODE 8810		TITLE: Transducer Split Coupling	
DIMENSIONS ARE IN INCHES		NAME	DATE	SIZE	
TOLERANCES:		DRAWN	7/8/2013	DWG. NO.	REV
FRACTIONAL ± 1/1		MATERIAL		AQU-INST	14
ANGULAR: MACH ± 0.1 BEND ± 2.0		304 SS		Qty: 1	SCALE: 2:1
TWO PLACE DECIMAL ± 0.01		Weight: 0.41 lbs		SHEET 17 OF 18	
THREE PLACE DECIMAL ± 0.005		DO NOT SCALE DRAWING			



UNLESS OTHERWISE SPECIFIED: DIMENSIONS ARE IN INCHES TOLERANCES: FRACTIONAL $\pm 1/1$ ANGULAR: MACH ± 0.1 BEND ± 2.0 TWO PLACE DECIMAL ± 0.01 THREE PLACE DECIMAL ± 0.005 DO NOT SCALE DRAWING	CODE 8810		TITLE: Calibration Tool		
	DRAWN	NAME	DATE	SIZE	DWG. NO.
		K. Patel	7/8/2013	B	AQU-INST
	MATERIAL	Al. 6061		REV	14
	Weight: lbs	Qty: 1	SCALE: 1:2	SHEET 18 OF 18	