

ALFA Sonars Testing - 2015/08/26

Wednesday 8/26/2015-

* Distance from truss to black target on RDDP: 23 m.

* Sonar Test

Distance from sonars (between the head mounts) to the barge edge: around 4.5 meters.

Depth of sonars from center of head mount to edge of outer tube: Blueview 1.21 m (initially 0.71 m); Split Beam 1.42 m

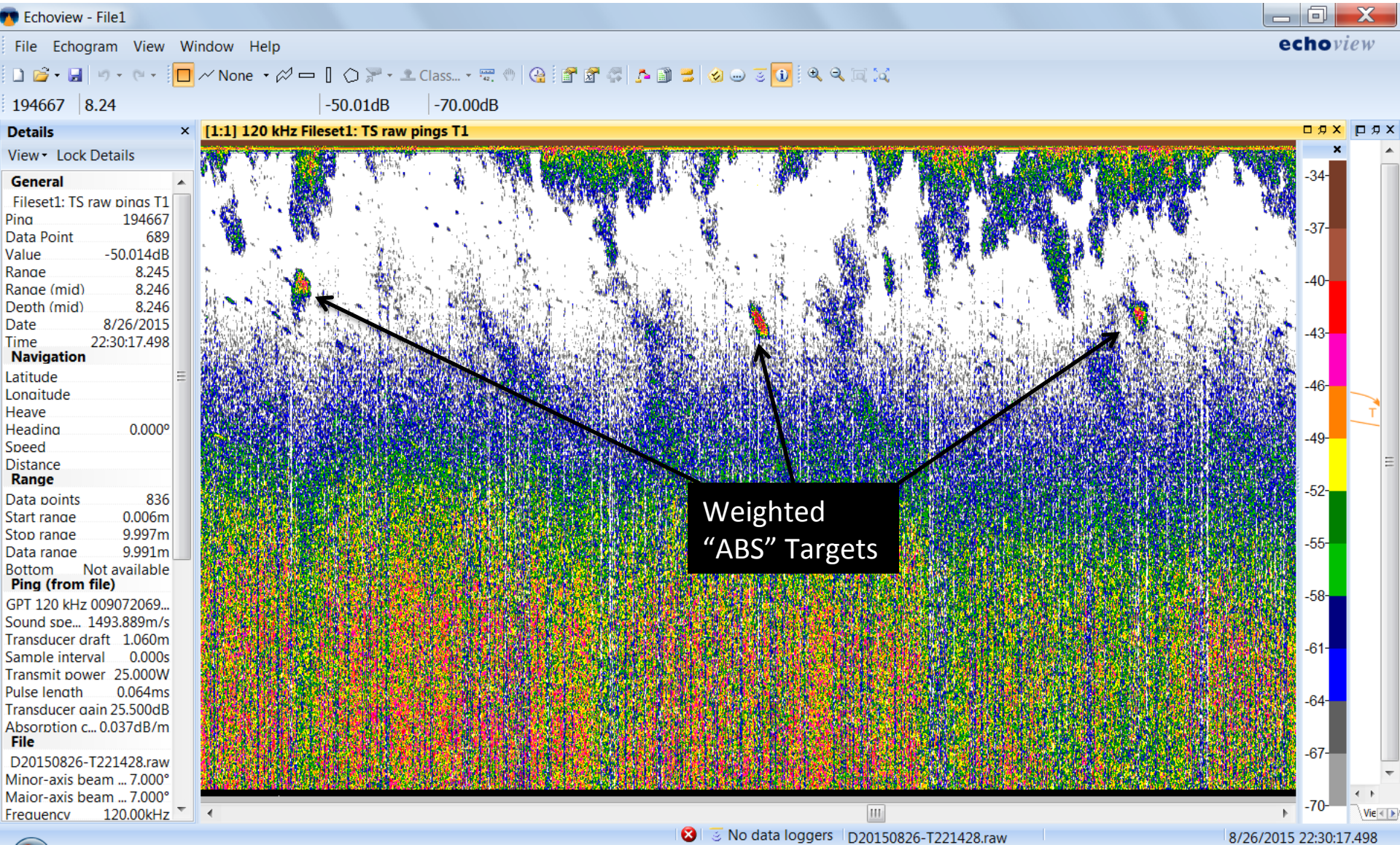
2015/08/26 14:30:18

2015/08/26 14:30:18 onshore

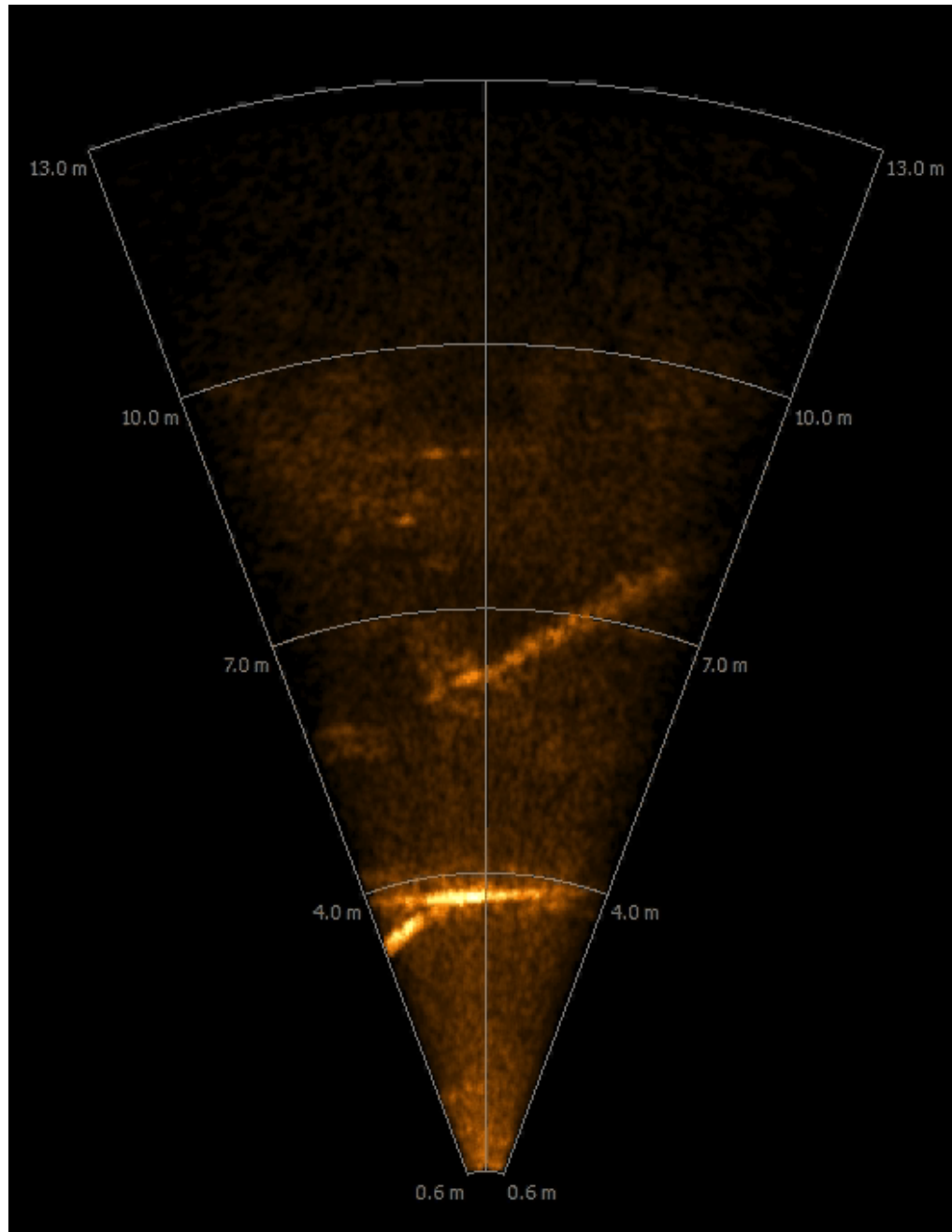
+26.0 c / 1412



Simrad: ABS Tubes Test



Blueview: 3 ABS Targets Detected



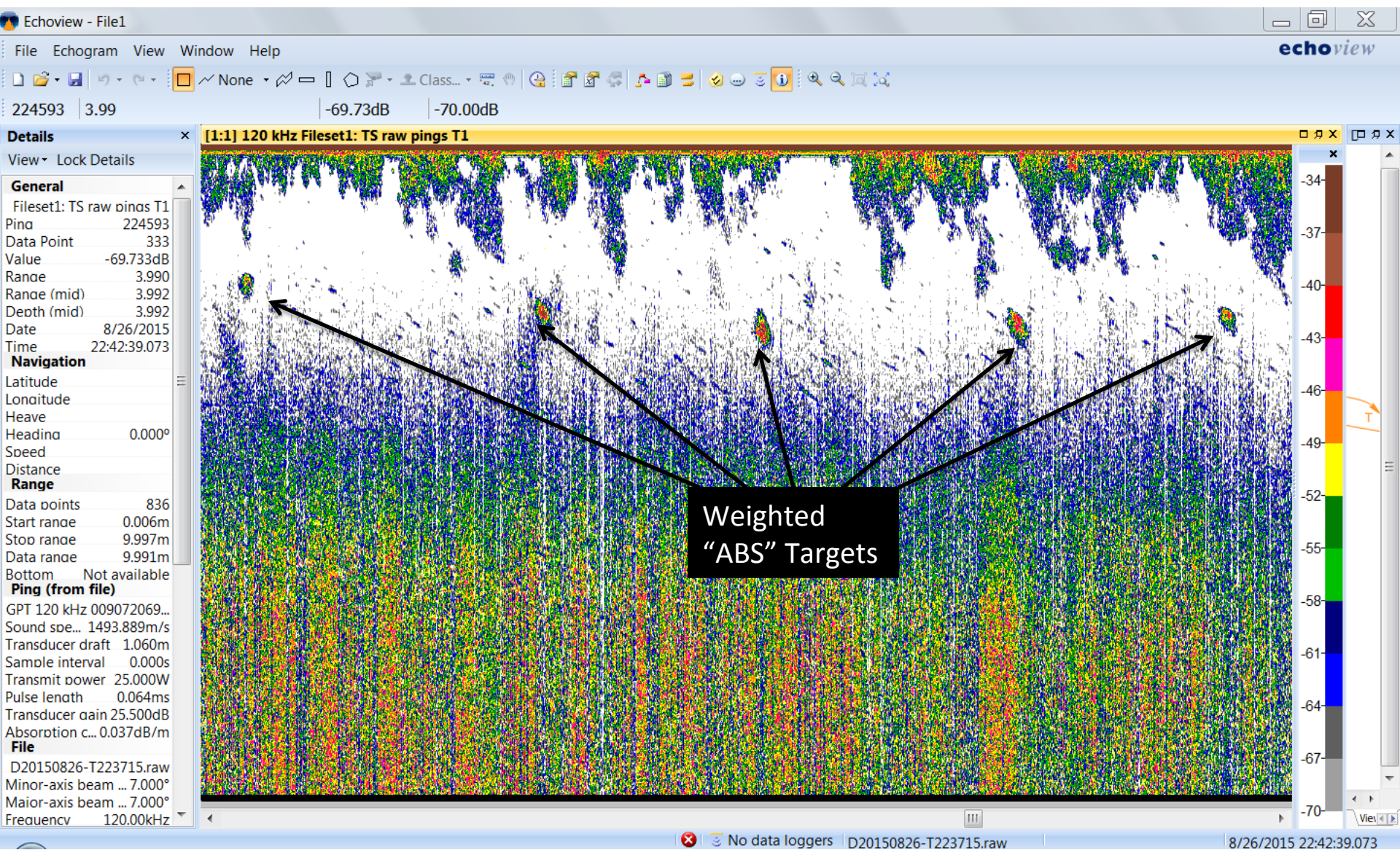
2015/08/26 14:42:39

2015/08/26 14:42:39 Onshore

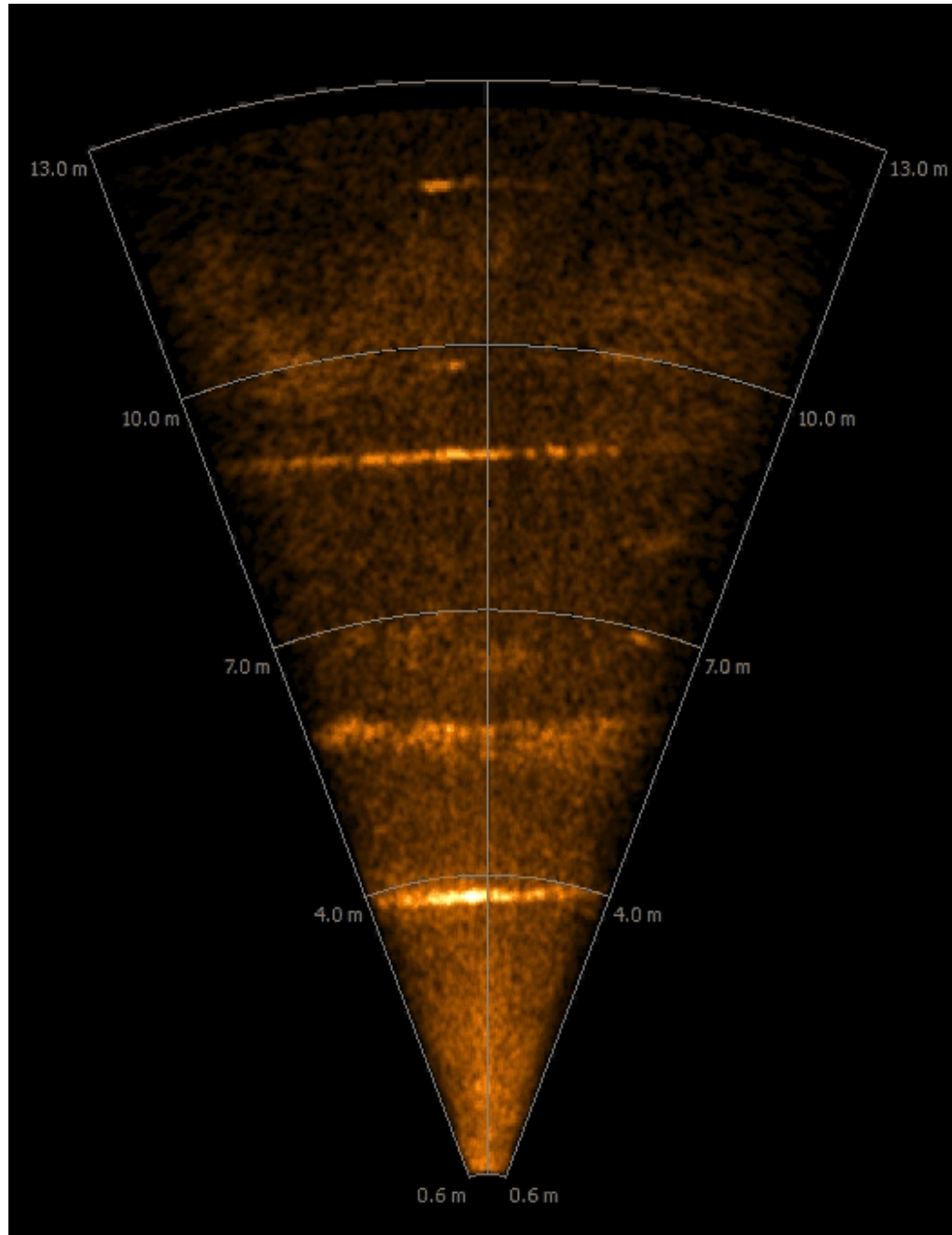
+25.5 C / 1412



Simrad: Tubes Test



Blueview: 5 Tubes Detected



2015/08/26 15:11:13

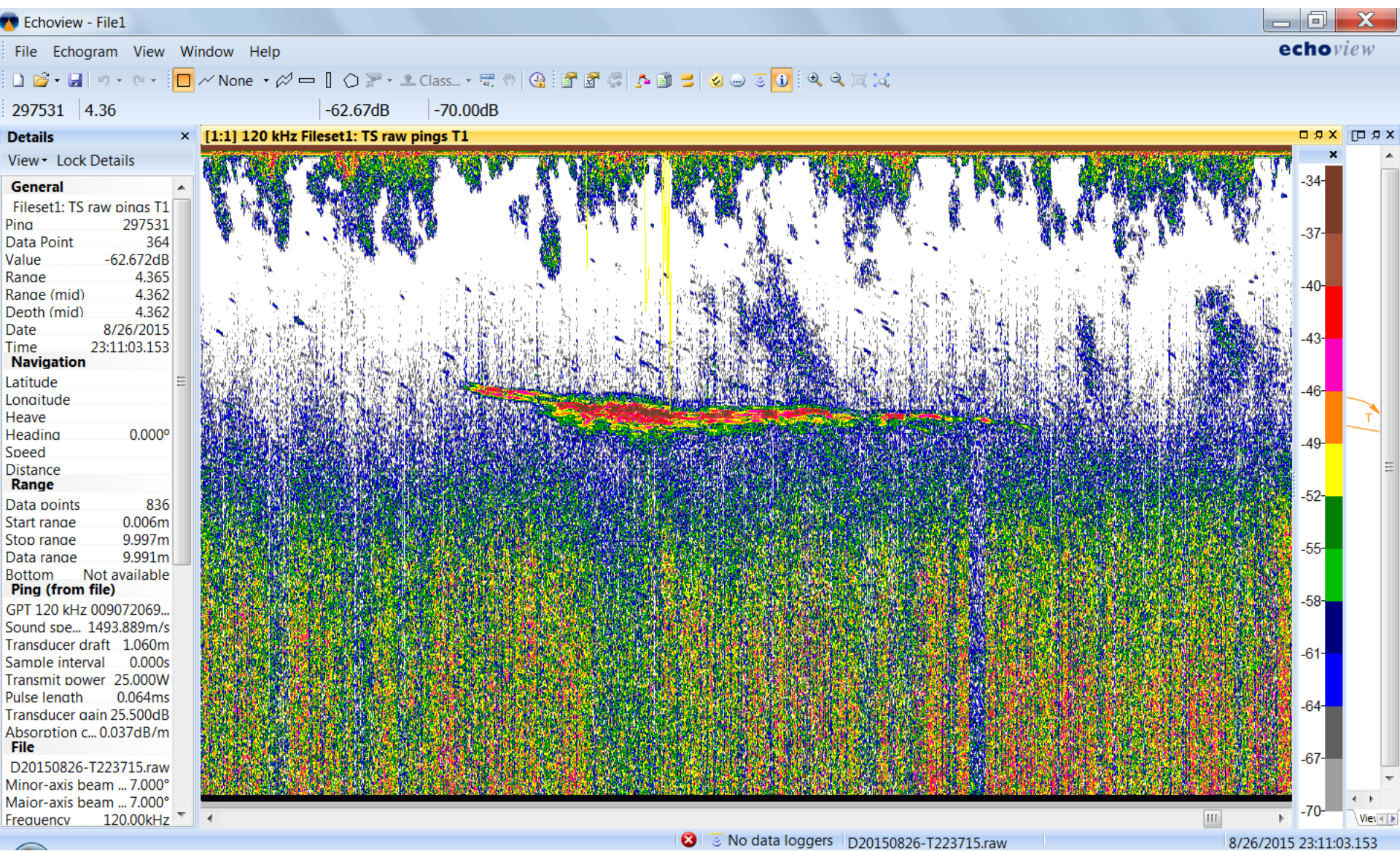
2015/08/26 15:11:13 Onshore

+24.5 C / 1412



Debris

Simrad: wooden pole held in place in split beam field of view



Blueview: No Detection

