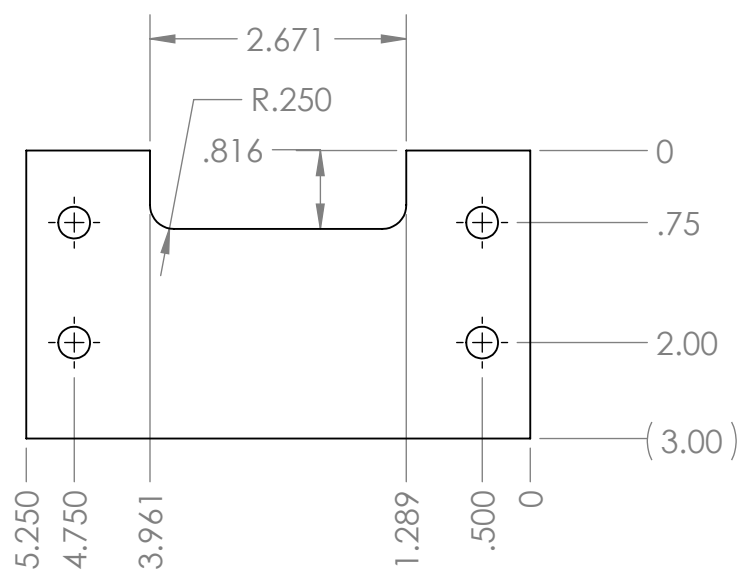
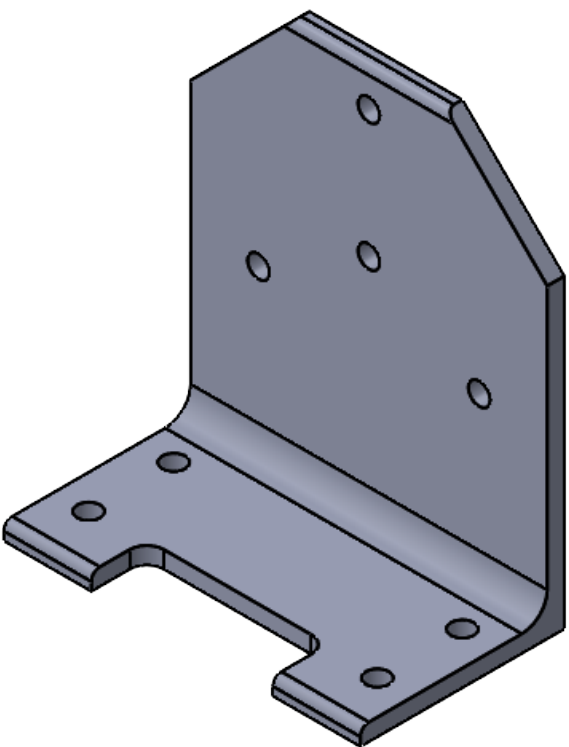
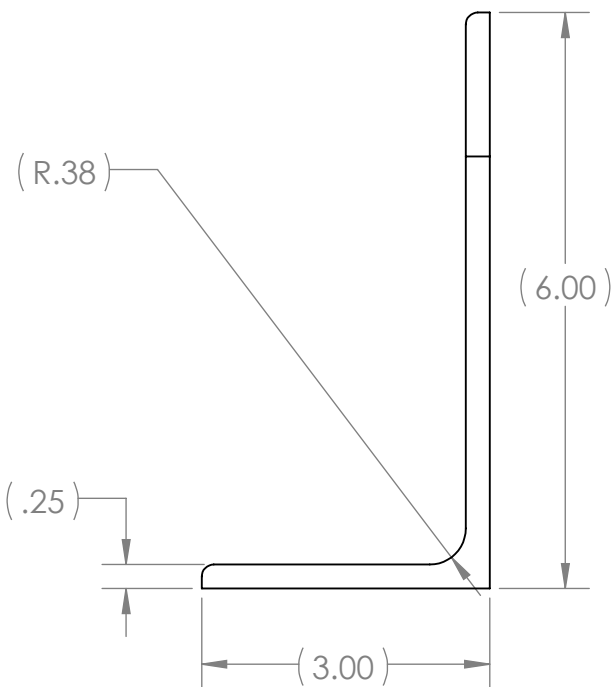



REVISIONS			
REV.	DESCRIPTION	DATE	APPROVED



		UNLESS OTHERWISE SPECIFIED		ITEM NO.		PART OR IDENTIFYING NO.		NOMENCLATURE OR DESCRIPTION		MATERIAL SPECIFICATION		QTY REQD					
		- APPLICABLE STANDARDS MIL-STD-XXX - SURFACE FINISH: 125RMS - MACHINED FILLETS R.015 MAX - REMOVE ALL BURRS, BREAK SHARP EDGES .015 MAX - DO NOT SCALE THIS DRAWING - DIMENSIONS ARE IN INCHES DIMENSIONS AND SURFACE FINISH TO BE MET AFTER PROTECTIVE COATINGS.		TOLERANCES ARE:		CAD GENERATED DRAWING, DO NOT MANUALLY UPDATE		 APPLIED PHYSICS LABORATORY Camera Mount Angle Bracket 2, Camera Tow Body, TEAMER IVC									
				FRACTIONS DECIMALS ANGLES +/- 1/16 .XX +/- .03 +/- .5 DEG .XXX +/- .005		APPROVALS				DATE							
				MATERIAL Aluminum 6061-T6		DRAWN JAMES JOSLIN CHECKED		4/29/2021									
						RESP ENG											
NEXT ASSY		USED ON		UNIT VOLUME:		MFG ENG				SIZE		CAGE CODE		DWG. NO.		REV.	
APPLICATION				UNIT WEIGHT:		QUAL ENG				B		98514					
										SCALE 1:2		CAD FILE: Camera_Mount_Angle_2		SHEET 1		OF 1	